

E-Selectin/CD62E Rabbit pAb

Catalog No.: A25027

Basic Information

Observed MW

115kDa

Calculated MW

66kDa

Category

Primary antibody

Applications

WB,ELISA

Cross-Reactivity

Mouse

Background

Predicted to enable several functions, including oligosaccharide binding activity; phospholipase binding activity; and sialic acid binding activity. Involved in positive regulation of leukocyte tethering or rolling. Acts upstream of or within positive regulation of leukocyte migration. Predicted to be located in several cellular components, including caveola; clathrin-coated pit; and perinuclear region of cytoplasm. Predicted to be integral component of plasma membrane. Predicted to be active in external side of plasma membrane and extracellular space. Is expressed in several structures, including adrenal gland; genitourinary system; incisor; integumental system; and limb segment. Human ortholog(s) of this gene implicated in IgA glomerulonephritis; brain ischemia; cerebrovascular disease; and coronary artery disease. Orthologous to human SELE (selectin E).

Recommended Dilutions

WB 1:1000 - 1:5000

ELISA Recommended starting concentration is 1 µg/mL. Please optimize the concentration based on your specific assay requirements.

Immunogen Information

Gene ID

20339

Swiss Prot

Q00690

Immunogen

Recombinant protein (or fragment). This information is considered to be commercially sensitive.

Synonyms

Elam; CD62E; ELAM-1; LECAM2; E-selectin; E-Selectin/CD62E

Contact

☎ | 400-999-6126

✉ | cn.market@abclonal.com.cn

🌐 | www.abclonal.com.cn

Product Information

Source

Rabbit

Isotype

IgG

Purification

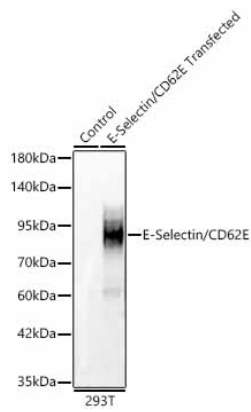
Affinity purification

Storage

Store at -20°C. Avoid freeze / thaw cycles.

Buffer: PBS containing 50% glycerol, preserved with proclin300 or sodium azide (as specified on the Certificate of Analysis), pH 7.3.

Validation Data



Western blot analysis of lysates from wild type (WT) and 293T cells transfected with E-Selectin/CD62E using E-Selectin/CD62E Rabbit pAb (A25027) at 1:2000 dilution.

Secondary antibody: HRP-conjugated Goat anti-Rabbit IgG (H+L) (AS014) at 1:10000 dilution.

Lysates/proteins: 25 µg per lane.

Blocking buffer: 3% nonfat dry milk in TBST.

Detection: ECL Basic Kit (RM00020).

Exposure time: 5s.