

# II15ra Rabbit pAb

Catalog No.: A25036

## Basic Information

### Observed MW

28kDa

### Calculated MW

28kDa

### Category

Primary antibody

### Applications

ELISA, WB

### Cross-Reactivity

Mouse

## Background

Predicted to enable interleukin-15 receptor activity and protein kinase binding activity. Acts upstream of or within positive regulation of natural killer cell differentiation. Located in cytoplasmic vesicle and plasma membrane. Is expressed in central nervous system; retina; retina inner nuclear layer; and retina outer nuclear layer. Orthologous to human IL15RA (interleukin 15 receptor subunit alpha).

## Recommended Dilutions

WB 1:500 - 1:1000

## Immunogen Information

### Gene ID

16169

### Swiss Prot

Q60819

### Immunogen

Recombinant Protein corresponding to a sequence within amino acids 33-105 of mouse II15ra(NP\_032384.1).

### Synonyms

IL-15RA; II15ra

## Contact

 | 400-999-6126

 | [cn.market@abclonal.com.cn](mailto:cn.market@abclonal.com.cn)

 | [www.abclonal.com.cn](http://www.abclonal.com.cn)

## Product Information

### Source

Rabbit

### Isotype

IgG

### Purification

Affinity purification

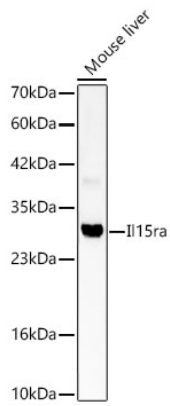
### Storage

Store at -20°C. Avoid freeze / thaw cycles.

Buffer: PBS with 0.05% proclin300, 50% glycerol, pH7.3.

## Validation Data

---



Western blot analysis of lysates from Mouse liver using IL15ra Rabbit pAb(A25036) at 1:1000 dilution.  
Secondary antibody:HRP Goat Anti-Rabbit IgG (H+L)(AS014) at 1:10000 dilution.  
Lysates/proteins: 25 µg per lane.  
Blocking buffer: 3% nonfat dry milk in TBST.  
Detection:ECL Basic Kit (RM00020).  
Exposure time:60s.