

CD26/DPP4 Rabbit pAb

Catalog No.: A25039

Basic Information

Observed MW

105kDa

Calculated MW

88kDa

Category

Primary antibody

Applications

ELISA, WB

Cross-Reactivity

Rat

Background

The DPP4 gene encodes dipeptidyl peptidase 4, which is identical to adenosine deaminase complexing protein-2, and to the T-cell activation antigen CD26. It is an intrinsic type II transmembrane glycoprotein and a serine exopeptidase that cleaves X-proline dipeptides from the N-terminus of polypeptides. Dipeptidyl peptidase 4 is highly involved in glucose and insulin metabolism, as well as in immune regulation. This protein was shown to be a functional receptor for Middle East respiratory syndrome coronavirus (MERS-CoV), and protein modeling suggests that it may play a similar role with SARS-CoV-2, the virus responsible for COVID-19.

Recommended Dilutions

WB 1:500 - 1:1000

Immunogen Information

Gene ID

1803

Swiss Prot

P27487

Immunogen

Recombinant Protein corresponding to a sequence within amino acids 29-766 of human CD26/DPP4(NP_001926.2).

Synonyms

CD26; ADABP; ADCP2; DPPIV; TP103; CD26/DPP4

Contact

☎ | 400-999-6126

✉ | cn.market@abclonal.com.cn

🌐 | www.abclonal.com.cn

Product Information

Source

Rabbit

Isotype

IgG

Purification

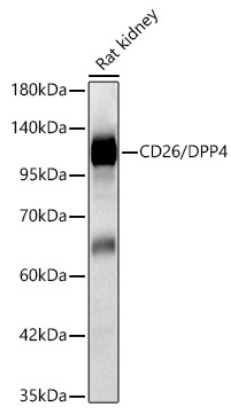
Affinity purification

Storage

Store at -20°C. Avoid freeze / thaw cycles.

Buffer: PBS with 0.05% proclin300, 50% glycerol, pH7.3.

Validation Data



Western blot analysis of lysates from Rat kidney using CD26/DPP4 Rabbit pAb(A25039) at 1:1000 dilution.
Secondary antibody:HRP Goat Anti-Rabbit IgG (H+L)(AS014) at 1:10000 dilution.
Lysates/proteins: 25 µg per lane.
Blocking buffer: 3% nonfat dry milk in TBST.
Detection:ECL Basic Kit (RM00020).
Exposure time:5s.