

# [KD Validated] EIF4B Rabbit pAb

Catalog No.: A25045

## Basic Information

### Observed MW

80kDa

### Calculated MW

69kDa

### Category

Primary antibody

### Applications

ELISA, WB, IHC-P

### Cross-Reactivity

Human, Mouse, Rat

## Background

Enables RNA binding activity. Predicted to be involved in eukaryotic translation initiation factor 4F complex assembly and formation of translation preinitiation complex. Located in cytosol. Biomarker of autism spectrum disorder and major depressive disorder.

## Recommended Dilutions

WB 1:500 - 1:1000

IHC-P 1:50 - 1:200

## Immunogen Information

### Gene ID

1975

### Swiss Prot

P23588

### Immunogen

Recombinant fusion protein containing a sequence corresponding to amino acids 88-178 of human EIF4B(NP\_064339.2).

### Synonyms

EIF-4B; PRO1843; 4B

## Contact

☎ | 400-999-6126

✉ | [cn.market@abclonal.com.cn](mailto:cn.market@abclonal.com.cn)

🌐 | [www.abclonal.com.cn](http://www.abclonal.com.cn)

## Product Information

### Source

Rabbit

### Isotype

IgG

### Purification

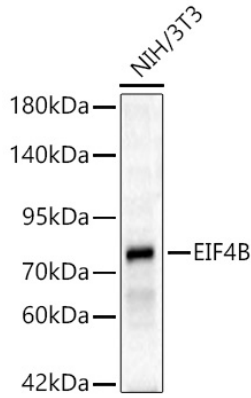
Affinity purification

### Storage

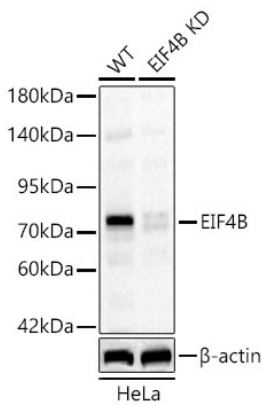
Store at -20°C. Avoid freeze / thaw cycles.

Buffer: PBS with 0.05% proclin300, 50% glycerol, pH7.3.

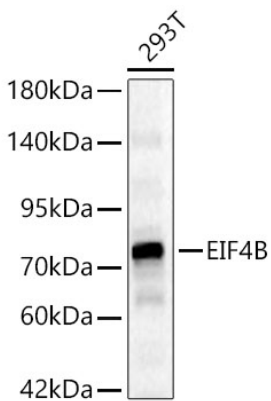
## Validation Data



Western blot analysis of lysates from NIH/3T3 cells using [KD Validated] EIF4B Rabbit pAb(A25045) at 1:1000 dilution.  
Secondary antibody: HRP Goat Anti-Rabbit IgG (H+L) (AS014) at 1:10000 dilution.  
Lysates/proteins: 25 µg per lane.  
Blocking buffer: 3% nonfat dry milk in TBST.  
Detection: ECL Basic Kit (RM00020).  
Exposure time: 90s.



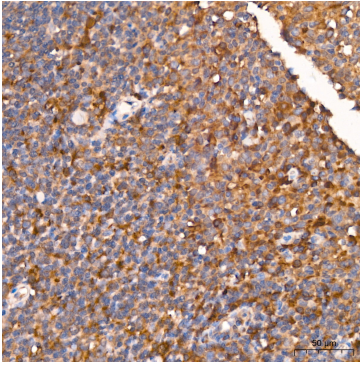
Western blot analysis of lysates from wild type (WT) and EIF4B knockdown (KD) HeLa cells using [KD Validated] EIF4B Rabbit pAb (A25045) at 1:1000 dilution.  
Secondary antibody: HRP Goat Anti-Rabbit IgG (H+L)(AS014) at 1:10000 dilution. Lysates/proteins: 25 µg per lane.  
Blocking buffer: 3% nonfat dry milk in TBST.  
Detection: ECL Basic Kit (RM00020).  
Exposure time: 60s.



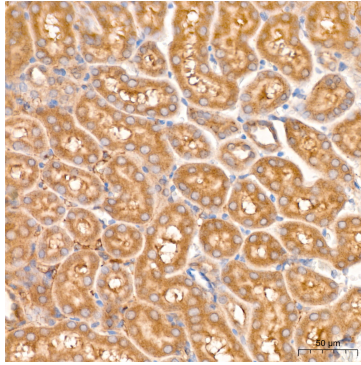
Western blot analysis of lysates from 293T cells using [KD Validated] EIF4B Rabbit pAb(A25045) at 1:1000 dilution.  
Secondary antibody: HRP Goat Anti-Rabbit IgG (H+L) (AS014) at 1:10000 dilution.  
Lysates/proteins: 25 µg per lane.  
Blocking buffer: 3% nonfat dry milk in TBST.  
Detection: ECL Basic Kit (RM00020).  
Exposure time: 60s.

## Validation Data

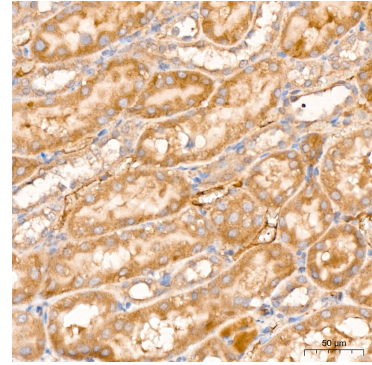
---



Immunohistochemistry analysis of EIF4B in paraffin-embedded human tonsil tissue using [KO Validated] EIF4B Rabbit pAb (A25045) at a dilution of 1:100 (40x lens). High pressure antigen retrieval was performed with 0.01 M citrate buffer (pH 6.0) prior to IHC staining.



Immunohistochemistry analysis of EIF4B in paraffin-embedded mouse kidney tissue using [KO Validated] EIF4B Rabbit pAb (A25045) at a dilution of 1:100 (40x lens). High pressure antigen retrieval was performed with 0.01 M citrate buffer (pH 6.0) prior to IHC staining.



Immunohistochemistry analysis of EIF4B in paraffin-embedded rat kidney tissue using [KO Validated] EIF4B Rabbit pAb (A25045) at a dilution of 1:100 (40x lens). High pressure antigen retrieval was performed with 0.01 M citrate buffer (pH 6.0) prior to IHC staining.