

# EPB41 Rabbit pAb

Catalog No.: A25049

## Basic Information

### Observed MW

81kDa/60-135kDa

### Calculated MW

97kDa

### Category

Primary antibody

### Applications

WB,IP,ELISA

### Cross-Reactivity

Human

## Background

The protein encoded by this gene, together with spectrin and actin, constitute the red cell membrane cytoskeletal network. This complex plays a critical role in erythrocyte shape and deformability. Mutations in this gene are associated with type 1 elliptocytosis (EL1). Alternatively spliced transcript variants encoding different isoforms have been described for this gene.

## Recommended Dilutions

**WB** 1:1000 - 1:5000

**IP** 0.5µg-4µg antibody for  
200µg-400µg extracts of  
whole cells

**ELISA** Recommended starting  
concentration is 1 µg/mL.  
Please optimize the  
concentration based on  
your specific assay  
requirements.

## Immunogen Information

### Gene ID

2035

### Swiss Prot

P11171

### Immunogen

Synthetic peptide. This information is considered to be commercially sensitive.

### Synonyms

HE; EL1; 4.1R

## Contact

☎ | 400-999-6126

✉ | [cn.market@abclonal.com.cn](mailto:cn.market@abclonal.com.cn)

🌐 | [www.abclonal.com.cn](http://www.abclonal.com.cn)

## Product Information

### Source

Rabbit

### Isotype

IgG

### Purification

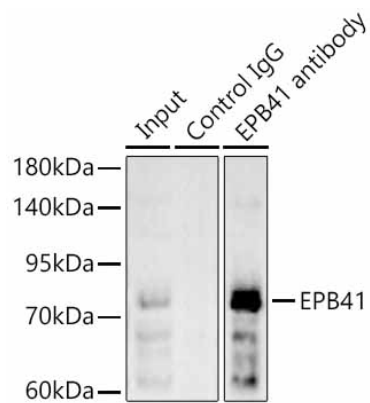
Affinity purification

### Storage

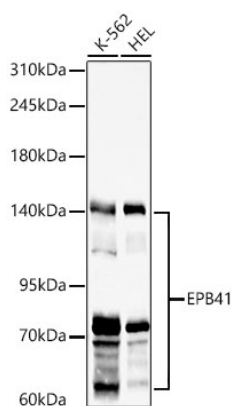
Store at -20°C. Avoid freeze / thaw cycles.

Buffer: PBS containing 50% glycerol, preserved with proclin300 or sodium azide (as specified on the Certificate of Analysis), pH 7.3.

## Validation Data



Immunoprecipitation of EPB41 in 300  $\mu$ g extracts from K-562 cells using 3  $\mu$ g EPB41 Rabbit pAb (A25049). Western blot analysis was performed using EPB41 Rabbit pAb (A25049) at 1:500 dilution.



Western blot analysis of various lysates using EPB41 Rabbit pAb (A25049) at 1:2000 dilution. Secondary antibody: HRP-conjugated Goat anti-Rabbit IgG (H+L) (AS014) at 1:10000 dilution. Lysates / proteins: 25  $\mu$ g per lane. Blocking buffer: 3 % nonfat dry milk in TBST. Detection: ECL Basic Kit (RM00020). Exposure time: 90s.