

# PSMC4 Rabbit pAb

Catalog No.: A2505

1 Publications

## Basic Information

### Observed MW

50kDa

### Calculated MW

47kDa

### Category

Primary antibody

### Applications

WB,IF/ICC,ELISA

### Cross-Reactivity

Human, Mouse, Rat

## Background

The 26S proteasome is a multicatalytic proteinase complex with a highly ordered structure composed of 2 complexes, a 20S core and a 19S regulator. The 20S core is composed of 4 rings of 28 non-identical subunits; 2 rings are composed of 7 alpha subunits and 2 rings are composed of 7 beta subunits. The 19S regulator is composed of a base, which contains 6 ATPase subunits and 2 non-ATPase subunits, and a lid, which contains up to 10 non-ATPase subunits. Proteasomes are distributed throughout eukaryotic cells at a high concentration and cleave peptides in an ATP/ubiquitin-dependent process in a non-lysosomal pathway. This gene encodes a member of the triple-A family of ATPases that is a component of the 19S regulatory subunit and plays a role in 26S proteasome assembly. The encoded protein interacts with gankyrin, a liver oncoprotein, and may also play a role in Parkinson's disease through interactions with synphilin-1. Alternatively spliced transcript variants encoding multiple isoforms have been observed for this gene.

## Recommended Dilutions

<b>WB</b>	1:500 - 1:1000
-----------	----------------

<b>IF/ICC</b>	1:50 - 1:200
---------------	--------------

<b>ELISA</b>	Recommended starting concentration is 1 µg/mL. Please optimize the concentration based on your specific assay requirements.
--------------	-----------------------------------------------------------------------------------------------------------------------------

## Immunogen Information

### Gene ID

5704

### Swiss Prot

P43686

### Immunogen

Recombinant fusion protein containing a sequence corresponding to amino acids 1-165 of human PSMC4 (NP\_006494.1).

### Synonyms

S6; RPT3; TBP7; TBP-7; MIP224; PSMC4

## Contact

		400-999-6126
------------------------------------------------------------------------------------	--	--------------

		cn.market@abclonal.com.cn
------------------------------------------------------------------------------------	--	---------------------------

		www.abclonal.com.cn
------------------------------------------------------------------------------------	--	---------------------

## Product Information

### Source

Rabbit

### Isotype

IgG

### Purification

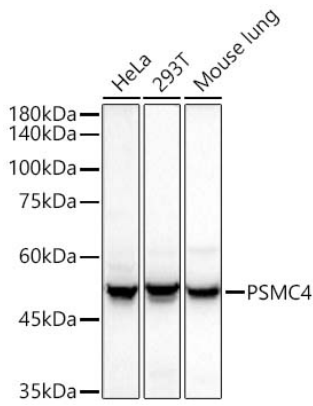
Affinity purification

### Storage

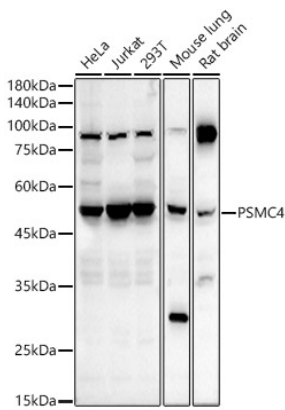
Store at -20°C. Avoid freeze / thaw cycles.

Buffer: PBS with 0.02% sodium azide,50% glycerol,pH7.3.

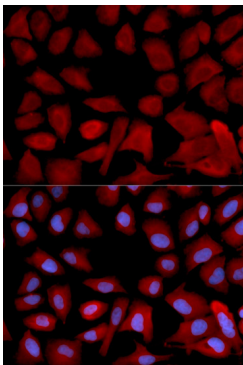
## Validation Data



Western blot analysis of various lysates using PSMC4 Rabbit pAb (A2505) at 1:400 dilution.  
Secondary antibody: HRP-conjugated Goat anti-Rabbit IgG (H+L) (AS014) at 1:10000 dilution.  
Lysates / proteins: 25 µg per lane.  
Blocking buffer: 3 % nonfat dry milk in TBST.  
Detection: ECL Basic Kit (RM00020).  
Exposure time: 10s.



Western blot analysis of various lysates using PSMC4 Rabbit pAb (A2505) at 1:400 dilution.  
Secondary antibody: HRP-conjugated Goat anti-Rabbit IgG (H+L) (AS014) at 1:10000 dilution.  
Lysates/proteins: 25µg per lane.  
Blocking buffer: 3% nonfat dry milk in TBST.  
Detection: ECL Basic Kit (RM00020).  
Exposure time: 90s.



Immunofluorescence analysis of U2OS cells using PSMC4 Rabbit pAb (A2505). Secondary antibody: Cy3-conjugated Goat anti-Rabbit IgG (H+L) (AS007) at 1:500 dilution. Blue: DAPI for nuclear staining.