

RIP3 Rabbit pAb

Catalog No.: A25050

Basic Information

Observed MW

Refer to figures

Calculated MW

53kDa

Category

Primary antibody

Applications

ELISA, IHC-P, IF/ICC

Cross-Reactivity

Human, Mouse, Rat

Background

Enables NF-kappaB-inducing kinase activity and protein serine/threonine kinase activity. Involved in several processes, including execution phase of necroptosis; hematopoietic or lymphoid organ development; and regulation of programmed cell death. Acts upstream of or within several processes, including I-kappaB kinase/NF-kappaB signaling; positive regulation of intrinsic apoptotic signaling pathway; and positive regulation of protein deacetylation. Located in cytoplasm and nucleus. Is expressed in several structures, including alimentary system; hemolymphoid system gland; male reproductive gland or organ; primitive streak; and turbinate bone primordium. Orthologous to human RIPK3 (receptor interacting serine/threonine kinase 3).

Recommended Dilutions

IHC-P 1:50 - 1:200

IF/ICC 1:50 - 1:200

Immunogen Information

Gene ID

56532

Swiss Prot

Q9QZL0

Immunogen

A synthetic peptide corresponding to a sequence within amino acids 320-420 of mouse RIP3(NP_064339.2).

Synonyms

Rip3; 2610528K09Rik; RIP3

Contact

☎ | 400-999-6126

✉ | cn.market@abclonal.com.cn

🌐 | www.abclonal.com.cn

Product Information

Source

Rabbit

Isotype

IgG

Purification

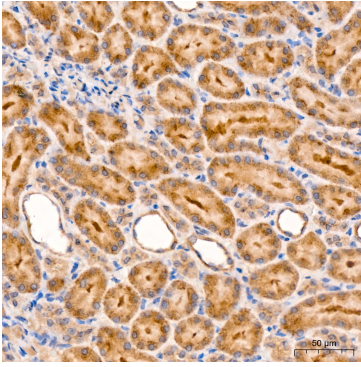
Affinity purification

Storage

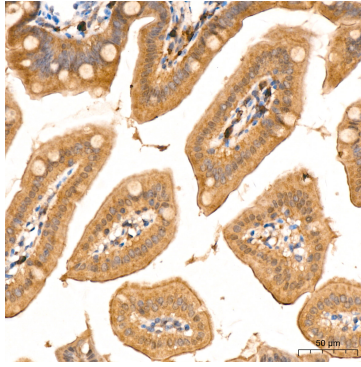
Store at -20°C. Avoid freeze / thaw cycles.

Buffer: PBS with 0.05% proclin300, 50% glycerol, pH7.3.

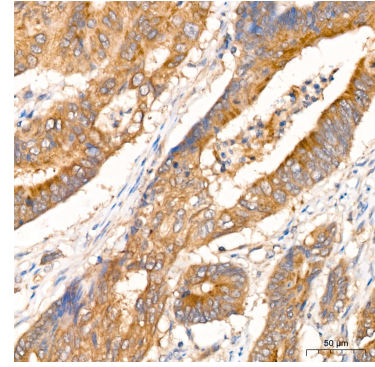
Validation Data



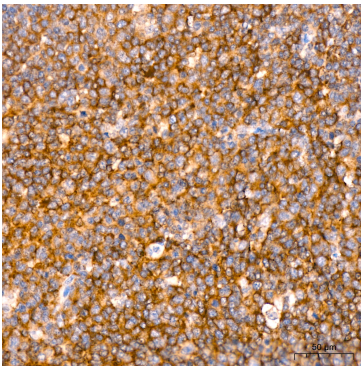
Immunohistochemistry analysis of RIP3 in paraffin-embedded rat kidney tissue using RIP3 Rabbit pAb (A25050) at a dilution of 1:100 (40x lens). High pressure antigen retrieval was performed with 0.01 M citrate buffer (pH 6.0) prior to IHC staining.



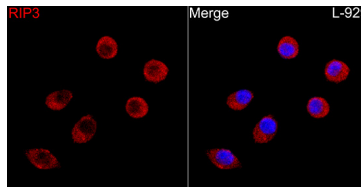
Immunohistochemistry analysis of RIP3 in paraffin-embedded mouse intestine tissue using RIP3 Rabbit pAb (A25050) at a dilution of 1:100 (40x lens). High pressure antigen retrieval was performed with 0.01 M citrate buffer (pH 6.0) prior to IHC staining.



Immunohistochemistry analysis of RIP3 in paraffin-embedded human colon carcinoma tissue using RIP3 Rabbit pAb (A25050) at a dilution of 1:100 (40x lens). High pressure antigen retrieval was performed with 0.01 M citrate buffer (pH 6.0) prior to IHC staining.



Immunohistochemistry analysis of RIP3 in paraffin-embedded human tonsil tissue using RIP3 Rabbit pAb (A25050) at a dilution of 1:100 (40x lens). High pressure antigen retrieval was performed with 0.01 M citrate buffer (pH 6.0) prior to IHC staining.



Immunofluorescence analysis of L-929 cells using RIP3 Rabbit pAb(A25050) at a dilution of 1:100 (40x lens). Secondary antibody: Cy3 Goat Anti-Rabbit IgG (H+L)(A5007) at 1:500 dilution. Blue: DAPI for nuclear staining.