

# PML+RARA Rabbit pAb

Catalog No.: A25051

## Basic Information

### Observed MW

Refer to figures

### Calculated MW

47-48kDa/62-97kDa/39kDa/50kDa

### Category

Primary antibody

### Applications

ELISA,IF/ICC

### Cross-Reactivity

Human, Rat

## Background

Promyelocytic leukemia/retinoic acid receptor alpha or PML-RARA refers to an abnormal fusion gene sequence. It is a specific rearrangement of genetic material from two separate chromosomes (chromosomal translocation) and is associated with a specific type of leukemia. Promyelocytic leukemia (PML) is a member of the tripartite motif (TRIM) family. The TRIM motif includes three zinc-binding domains, a RING, a B-box type 1 and a B-box type 2, and a coiled-coil region. This phosphoprotein localizes to nuclear bodies where it functions as a transcription factor and tumor suppressor. Its expression is cell-cycle related and it regulates the p53 response to oncogenic signals. The gene is often involved in the translocation with the retinoic acid receptor alpha gene associated with acute promyelocytic leukemia (APL). Retinoic acid receptor alpha (RARA), regulates transcription in a ligand-dependent manner. This gene has been implicated in regulation of development, differentiation, apoptosis, granulopoiesis, and transcription of clock genes. Translocations between this locus and several other loci have been associated with acute promyelocytic leukemia.

## Recommended Dilutions

IF/ICC 1:50 - 1:200

## Immunogen Information

### Gene ID

5371/5914

### Swiss Prot

P29590/P10276

### Immunogen

A synthetic peptide corresponding to a sequence within amino acids 500-600/1-100 of human PML+RARA(NP\_150241.2/ NP\_000955.1).

### Synonyms

PML/RARA; Type L APL

## Contact

☎ | 400-999-6126

✉ | [cn.market@abclonal.com.cn](mailto:cn.market@abclonal.com.cn)

🌐 | [www.abclonal.com.cn](http://www.abclonal.com.cn)

## Product Information

### Source

Rabbit

### Isotype

IgG

### Purification

Affinity purification

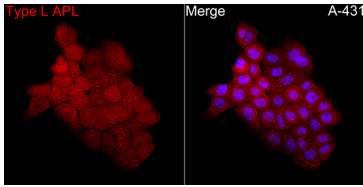
### Storage

Store at -20°C. Avoid freeze / thaw cycles.

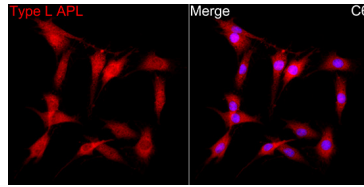
Buffer: PBS with 0.05% proclin300,50% glycerol,pH7.3.

## Validation Data

---



Immunofluorescence analysis of A-431 cells using Type L APL Rabbit pAb(A25051) at a dilution of 1:100 (40x lens). Secondary antibody: Cy3 Goat Anti-Rabbit IgG (H+L)(AS007) at 1:500 dilution. Blue: DAPI for nuclear staining.



Immunofluorescence analysis of C6 cells using Type L APL Rabbit pAb(A25051) at a dilution of 1:100 (40x lens). Secondary antibody: Cy3 Goat Anti-Rabbit IgG (H+L)(AS007) at 1:500 dilution. Blue: DAPI for nuclear staining.