

ABflo® 488 Rabbit anti-Mouse CD28 mAb

Catalog No.: A25056

Basic Information

Observed MW

Calculated MW

25kDa

Category

Primary antibody

Applications

FC

Cross-Reactivity

Mouse

CloneNo number

ARC63635

Conjugate

ABflo® 488. Ex:491nm. Em:516nm.

Background

Enables protein kinase binding activity. Acts upstream of or within several processes, including positive regulation of immune response; positive regulation of intracellular signal transduction; and regulation of lymphocyte activation. Located in external side of plasma membrane and immunological synapse. Human ortholog(s) of this gene implicated in multiple sclerosis and type 1 diabetes mellitus. Orthologous to human CD28 (CD28 molecule).

Recommended Dilutions

FC 5 µl per 10⁶ cells in
100 µl volume

Immunogen Information

Gene ID

12487

Swiss Prot

P31041

Immunogen

Recombinant protein (or fragment). This information is considered to be commercially sensitive.

Synonyms

Cd28

Contact

 | 400-999-6126

 | cn.market@abclonal.com.cn

 | www.abclonal.com.cn

Product Information

Source

Rabbit

Isotype

IgG

Purification

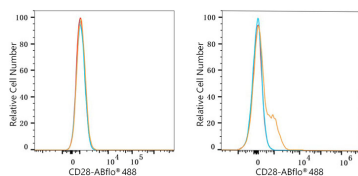
Affinity purification

Storage

Store at 2-8°C. Avoid freeze.

Buffer: PBS containing 0.2% BSA, preserved with proclin300 or sodium azide (as specified on the Certificate of Analysis), pH 7.3.

Validation Data



Flow cytometry: 1X10⁶ NIH/3T3 cells (negative control, left) and C57BL/6 mouse Splenocytes (right) were surface-stained with ABflo® 488 Rabbit anti-Mouse CD28 mAb (A25056, 5 µl/Test, orange line) or ABflo® 488 Rabbit IgG isotype control (A22069, 5 µl/Test, blue line). Non-fluorescently stained cells were used as blank control (red line).