

ABflo® 647 Rabbit anti-Mouse CD28 mAb

Catalog No.: A25057

Basic Information

Observed MW

Calculated MW

25kDa

Category

Primary antibody

Applications

FC

Cross-Reactivity

Mouse

CloneNo number

ARC63635-ABflo647

Conjugate

ABflo® 647. Ex:648nm. Em:664nm.

Recommended Dilutions

FC 5 µl per 10⁶ cells in
100 µl volume

Background

Enables protein kinase binding activity. Acts upstream of or within several processes, including positive regulation of immune response; positive regulation of intracellular signal transduction; and regulation of lymphocyte activation. Located in external side of plasma membrane and immunological synapse. Human ortholog(s) of this gene implicated in multiple sclerosis and type 1 diabetes mellitus. Orthologous to human CD28 (CD28 molecule).

Immunogen Information

Gene ID

12487

Swiss Prot

P31041

Immunogen

Recombinant fusion protein containing a sequence corresponding to amino acids 20-149 of mouse CD28 (NP_031668.3).

Synonyms

Cd28

Contact

☎ | 400-999-6126

✉ | cn.market@abclonal.com.cn

🌐 | www.abclonal.com.cn

Product Information

Source

Rabbit

Isotype

IgG

Purification

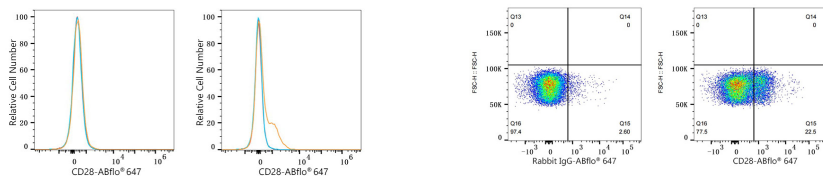
Affinity purification

Storage

Store at 2-8°C. Avoid freeze.

Buffer: PBS with 0.03% proclin300,0.2% BSA,pH7.3.

Validation Data



Flow cytometry: 1×10^6 NIH/3T3 cells (negative control, left) and C57BL/6 mouse Splenocytes (right) were surface-stained with ABflo[®] 647 Rabbit anti-Mouse CD28 mAb (A25057, 5 μ l/Test, orange line) or ABflo[®] 647 Rabbit IgG isotype control (A22070, 5 μ l/Test, blue line). Non-fluorescently stained cells were used as blank control (red line).

Flow cytometry: 1×10^6 C57BL/6 mouse splenocytes were surface-stained with ABflo[®] 647 Rabbit IgG isotype control (A22070, 5 μ l/Test, left) or ABflo[®] 647 Rabbit anti-Mouse CD28 mAb (A25057, 5 μ l/Test, right).