

# ABflo® 594 Rabbit anti-Mouse CD28 mAb

Catalog No.: A25058

## Basic Information

### Observed MW

### Calculated MW

25kDa

### Category

Primary antibody

### Applications

FC

### Cross-Reactivity

Mouse

### CloneNo number

ARC63635-ABflo594

### Conjugate

ABflo® 594. Ex:588nm. Em:604nm.

## Recommended Dilutions

FC 5 µl per 10<sup>6</sup> cells in  
100 µl volume

## Background

Enables protein kinase binding activity. Acts upstream of or within several processes, including positive regulation of immune response; positive regulation of intracellular signal transduction; and regulation of lymphocyte activation. Located in external side of plasma membrane and immunological synapse. Human ortholog(s) of this gene implicated in multiple sclerosis and type 1 diabetes mellitus. Orthologous to human CD28 (CD28 molecule).

## Immunogen Information

### Gene ID

12487

### Swiss Prot

P31041

### Immunogen

Recombinant fusion protein containing a sequence corresponding to amino acids 20-149 of mouse CD28 (NP\_031668.3).

### Synonyms

Cd28

## Contact

☎ | 400-999-6126

✉ | [cn.market@abclonal.com.cn](mailto:cn.market@abclonal.com.cn)

🌐 | [www.abclonal.com.cn](http://www.abclonal.com.cn)

## Product Information

### Source

Rabbit

### Isotype

IgG

### Purification

Affinity purification

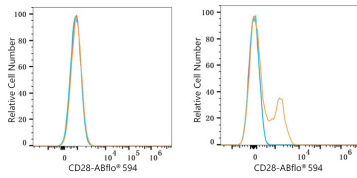
### Storage

Store at 2-8°C. Avoid freeze.

Buffer: PBS with 0.03% proclin300,0.2% BSA,pH7.3.

## Validation Data

---



Flow cytometry:  $1 \times 10^6$  NIH/3T3 cells (negative control, left) and C57BL/6 mouse Splenocytes (right) were surface-stained with ABflo® 594 Rabbit anti-Mouse CD28 mAb (A25058, 5  $\mu$ l/Test, orange line) or ABflo® 594 Rabbit IgG isotype control (A23821, 5  $\mu$ l/Test, blue line). Non-fluorescently stained cells were used as blank control (red line).