

# ABflo® 488 Rabbit anti-Human CD39/ENTPD1 mAb

Catalog No.: A25059

## Basic Information

### Observed MW

### Calculated MW

58kDa

### Category

Primary antibody

### Applications

FC

### Cross-Reactivity

Human

### CloneNo number

ARC64460-ABflo488

### Conjugate

ABflo® 488. Ex:491nm. Em:516nm.

## Recommended Dilutions

FC 5 µl per 10<sup>6</sup> cells in  
100 µl volume

## Background

The protein encoded by this gene is a plasma membrane protein that hydrolyzes extracellular ATP and ADP to AMP. Inhibition of this protein's activity may confer anticancer benefits. Several transcript variants encoding different isoforms have been found for this gene.

## Immunogen Information

### Gene ID

953

### Swiss Prot

P49961

### Immunogen

Recombinant fusion protein containing a sequence corresponding to amino acids 255-442 of human CD39/ENTPD1 (NP\_001767.3) .

### Synonyms

CD39; SPG64; ATPDase; NTPDase-1

## Contact

☎ | 400-999-6126

✉ | [cn.market@abclonal.com.cn](mailto:cn.market@abclonal.com.cn)

🌐 | [www.abclonal.com.cn](http://www.abclonal.com.cn)

## Product Information

### Source

Rabbit

### Isotype

IgG

### Purification

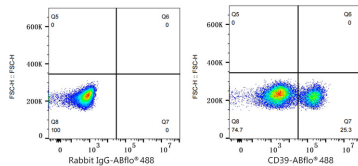
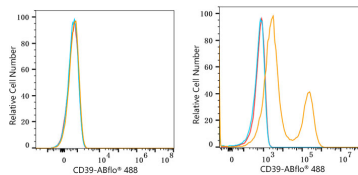
Affinity purification

### Storage

Store at 2-8°C. Avoid freeze.

Buffer: PBS with 0.03% proclin300,0.2% BSA,pH7.3.

## Validation Data



Flow cytometry:  $1 \times 10^6$  293F cells (negative control, left) and 293F (Transfection, right) cells were surface-stained with ABflo® 488 Rabbit anti-Human CD39/ENTPD1 mAb (A25059, 5  $\mu$ l/Test, orange line) or ABflo® 488 Rabbit IgG isotype control (A22069, 5  $\mu$ l/Test, blue line). Non-fluorescently stained cells were used as blank control (red line).

Flow cytometry:  $1 \times 10^6$  293F (Transfection) cells were surface-stained with ABflo® 488 Rabbit IgG isotype control (A22069, 5  $\mu$ l/Test, left) or ABflo® 488 Rabbit anti-Human CD39/ENTPD1 mAb (A25059, 5  $\mu$ l/Test, right).