

ABflo® 594 Rabbit anti-Human CD39/ENTPD1 mAb

Catalog No.: A25061

Basic Information

Observed MW

Calculated MW

58kDa

Category

Primary antibody

Applications

FC

Cross-Reactivity

Human

CloneNo number

ARC64460-ABflo594

Conjugate

ABflo® 594. Ex:588nm. Em:604nm.

Recommended Dilutions

FC 5 µl per 10⁶ cells in
100 µl volume

Background

The protein encoded by this gene is a plasma membrane protein that hydrolyzes extracellular ATP and ADP to AMP. Inhibition of this protein's activity may confer anticancer benefits. Several transcript variants encoding different isoforms have been found for this gene.

Immunogen Information

Gene ID

953

Swiss Prot

P49961

Immunogen

Recombinant fusion protein containing a sequence corresponding to amino acids 255-442 of human CD39/ENTPD1 (NP_001767.3).

Synonyms

CD39; SPG64; ATPDase; NTPDase-1

Contact

☎ | 400-999-6126

✉ | cn.market@abclonal.com.cn

🌐 | www.abclonal.com.cn

Product Information

Source

Rabbit

Isotype

IgG

Purification

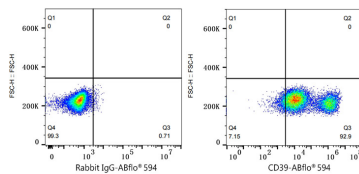
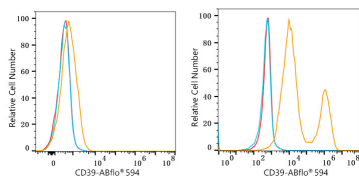
Affinity purification

Storage

Store at 2-8°C. Avoid freeze.

Buffer: PBS with 0.03% proclin300,0.2% BSA,pH7.3.

Validation Data



Flow cytometry: 1×10^6 293F cells (negative control, left) and 293F (Transfection, right) cells were surface-stained with ABflo® 594 Rabbit anti-Human CD39/ENTPD1 mAb (A25061,5 μ l/Test, orange line) or ABflo® 594 Rabbit IgG isotype control (A23821,5 μ l/Test, blue line). Non-fluorescently stained cells were used as blank control (red line).

Flow cytometry: 1×10^6 293F (Transfection) cells were surface-stained with ABflo® 594 Rabbit IgG isotype control (A23821,5 μ l/Test, left) or ABflo® 594 Rabbit anti-Human CD39/ENTPD1 mAb (A25061,5 μ l/Test, right).