

# ABflo® 647 Rabbit anti-Human CD104/Integrin β4 mAb

Catalog No.: A25063

## Basic Information

### Observed MW

### Calculated MW

202kDa

### Category

Primary antibody

### Applications

IF/ICC,FC

### Cross-Reactivity

Human

### CloneNo number

ARC64818-ABflo647

### Conjugate

ABflo® 647. Ex:648nm. Em:664nm.

## Recommended Dilutions

IF/ICC	1:50 - 1:200
FC	5 µl per 10 <sup>6</sup> cells in 100 µl volume

## Contact

	400-999-6126
	<a href="mailto:cn.market@abclonal.com.cn">cn.market@abclonal.com.cn</a>
	<a href="http://www.abclonal.com.cn">www.abclonal.com.cn</a>

## Background

Integrins are heterodimers comprised of alpha and beta subunits, that are noncovalently associated transmembrane glycoprotein receptors. Different combinations of alpha and beta polypeptides form complexes that vary in their ligand-binding specificities. Integrins mediate cell-matrix or cell-cell adhesion, and transduced signals that regulate gene expression and cell growth. This gene encodes the integrin beta 4 subunit, a receptor for the laminins. This subunit tends to associate with alpha 6 subunit and is likely to play a pivotal role in the biology of invasive carcinoma. Mutations in this gene are associated with epidermolysis bullosa with pyloric atresia. Multiple alternatively spliced transcript variants encoding distinct isoforms have been found for this gene.

## Immunogen Information

### Gene ID

3691

### Swiss Prot

P16144

### Immunogen

Recombinant fusion protein containing a sequence corresponding to amino acids 611-710AA of human CD104/Integrin β4 (NP\_000204.3).

### Synonyms

CD104; GP150; JEB5A; JEB5B

## Product Information

### Source

Rabbit

### Isotype

IgG

### Purification

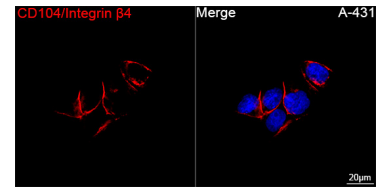
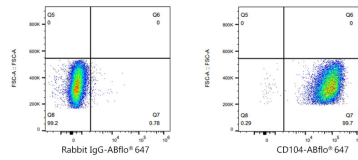
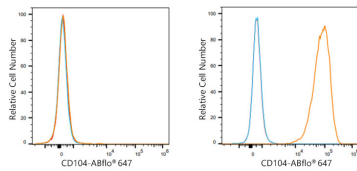
Affinity purification

### Storage

Store at 2-8°C. Avoid freeze.

Buffer: PBS with 0.03% proclin300,0.2% BSA,pH7.3.

## Validation Data



Flow cytometry:  $1 \times 10^6$  K-562 cells (negative control, left) and A431 cells (right) were surface-stained with ABflo® 647 Rabbit anti-Human CD104/Integrin β4 mAb (A25063, 5 µl/Test, orange line) or ABflo® 647 Rabbit IgG isotype control (A22070, 5 µl/Test, blue line). Non-fluorescently stained cells were used as blank control (red line).

Flow cytometry:  $1 \times 10^6$  A431 cells were surface-stained with ABflo® 647 Rabbit IgG isotype control (A22070, 5 µl/Test, left) or ABflo® 647 Rabbit anti-Human CD104/Integrin β4 mAb (A25063, 5 µl/Test, right).

Confocal imaging of A-431 cells using ABflo® 647 Rabbit anti-Human CD104/Integrin β4 mAb (A25063, dilution 1:100). DAPI was used for nuclear staining (Blue). Objective: 100x.