

ABflo® 594 Rabbit anti-Human CD327/SIGLEC6 mAb

Catalog No.: A25067

Basic Information

Observed MW

Calculated MW

50kDa

Category

Primary antibody

Applications

FC

Cross-Reactivity

Human

CloneNo number

ARC64799-ABflo594

Conjugate

ABflo® 594. Ex:588nm. Em:604nm.

Recommended Dilutions

FC 5 µl per 10⁶ cells in
100 µl volume

Background

This gene encodes a member of the SIGLEC (sialic acid binding immunoglobulin-like lectin) family of proteins. The encoded transmembrane receptor binds sialyl-TN glycans and leptin. Placental expression of the encoded protein is upregulated in preeclampsia.

Immunogen Information

Gene ID

946

Swiss Prot

O43699

Immunogen

Recombinant fusion protein containing a sequence corresponding to amino acids 27-331 of human CD327/SIGLEC6 (NP_001236.4).

Synonyms

CD327; CD33L; OBBP1; CD33L1; CD33L2; CDW327

Contact

☎ | 400-999-6126

✉ | cn.market@abclonal.com.cn

🌐 | www.abclonal.com.cn

Product Information

Source

Rabbit

Isotype

IgG

Purification

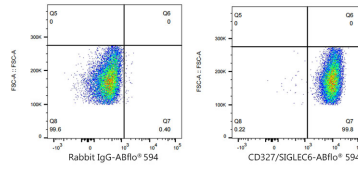
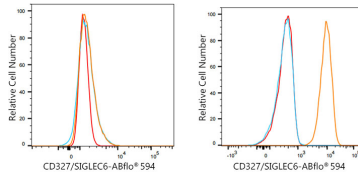
Affinity purification

Storage

Store at 2-8°C. Avoid freeze.

Buffer: PBS with 0.03% proclin300,0.2% BSA,pH7.3.

Validation Data



Flow cytometry: 1×10^6 HeLa cells (negative control, left) and U-937 cells (right) were surface-stained with ABflo® 594 Rabbit anti-Human CD327/SIGLEC6 mAb (A25067,5 μ l/Test, orange line) or ABflo® 594 Rabbit IgG isotype control (A23821,5 μ l/Test, blue line). Non-fluorescently stained cells were used as blank control (red line).

Flow cytometry: 1×10^6 U-937 cells were surface-stained with ABflo® 594 Rabbit IgG isotype control (A23821,5 μ l/Test, left) or ABflo® 594 Rabbit anti-Human CD327/SIGLEC6 mAb (A25067,5 μ l/Test, right).