

ABflo® 594 Rabbit anti-Human LIFR/CD118 mAb

Catalog No.: A25078

Basic Information

Observed MW

Calculated MW

124kDa

Category

Primary antibody

Applications

FC

Cross-Reactivity

Human

CloneNo number

ARC65282-ABflo594

Conjugate

ABflo® 594. Ex:588nm. Em:604nm.

Recommended Dilutions

FC 5 µl per 10⁶ cells in
100 µl volume

Background

This gene encodes a protein that belongs to the type I cytokine receptor family. This protein combines with a high-affinity converter subunit, gp130, to form a receptor complex that mediates the action of the leukemia inhibitory factor, a polyfunctional cytokine that is involved in cellular differentiation, proliferation and survival in the adult and the embryo. Mutations in this gene cause Schwartz-Jampel syndrome type 2, a disease belonging to the group of the bent-bone dysplasias. A translocation that involves the promoter of this gene, t(5;8)(p13;q12) with the pleiomorphic adenoma gene 1, is associated with salivary gland pleiomorphic adenoma, a common type of benign epithelial tumor of the salivary gland. Multiple splice variants encoding two different isoforms have been found for this gene.

Immunogen Information

Gene ID

3977

Swiss Prot

P42702

Immunogen

Recombinant fusion protein containing a sequence corresponding to amino acids 45-833 of human LIFR/CD118 (NP_002301.1).

Synonyms

SWS; SJS2; STWS; CD118; LIF-R

Contact

☎ | 400-999-6126

✉ | cn.market@abclonal.com.cn

🌐 | www.abclonal.com.cn

Product Information

Source

Rabbit

Isotype

IgG

Purification

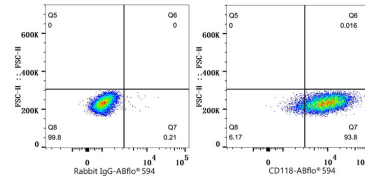
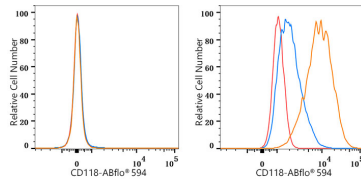
Affinity purification

Storage

Store at 2-8°C. Avoid freeze.

Buffer: PBS with 0.03% proclin300,0.2% BSA,pH7.3.

Validation Data



Flow cytometry: 1X10⁶ REH cells (negative control, left) and HeLa cells (right) were surface-stained with ABflo® 594 Rabbit anti-Human LIFR/CD118 mAb (A25078, 5 µl/test, orange line) or ABflo® 594 Rabbit IgG isotype control (A23821, 5 µl/test, blue line). Non-fluorescently stained cells were used as blank control (red line).

Flow cytometry: 1X10⁶ HeLa cells were surface-stained with ABflo® 594 Rabbit IgG isotype control (A23821, 5 µl/test, left) or ABflo® 594 Rabbit anti-Human LIFR/CD118 mAb (A25078, 5 µl/test, right).