

ABflo® 488 Rabbit anti-Human/Monkey HLA-DR mAb

Catalog No.: A25079

Basic Information

Observed MW

Calculated MW
29kDa

Category
Primary antibody

Applications
FC

Cross-Reactivity
Human, Cynomolgus

CloneNo number
ARC5141-01

Conjugate
ABflo® 488. Ex:491nm. Em:516nm.

Recommended Dilutions

FC 5 µl per 10⁶ cells in
100 µl volume

Background

HLA-DRA is one of the HLA class II alpha chain paralogues. This class II molecule is a heterodimer consisting of an alpha and a beta chain, both anchored in the membrane. This molecule is expressed on the surface of various antigen presenting cells such as B lymphocytes, dendritic cells, and monocytes/macrophages, and plays a central role in the immune system and response by presenting peptides derived from extracellular proteins, in particular, pathogen-derived peptides to T cells. The alpha chain is approximately 33-35 kDa and its gene contains 5 exons. Exon 1 encodes the leader peptide, exons 2 and 3 encode the two extracellular domains, and exon 4 encodes the transmembrane domain and the cytoplasmic tail. DRA does not have polymorphisms in the peptide binding part and acts as the sole alpha chain for DRB1, DRB3, DRB4 and DRB5.

Immunogen Information

Gene ID
3122

Swiss Prot
P01903

Immunogen

Recombinant protein (or fragment). This information is considered to be commercially sensitive.

Synonyms
HLA-DRA1

Contact

☎ | 400-999-6126
✉ | cn.market@abclonal.com.cn
🌐 | www.abclonal.com.cn

Product Information

Source
Rabbit

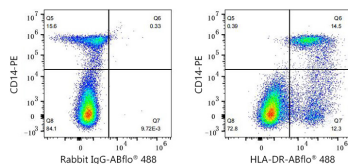
Isotype
IgG

Purification
Affinity purification

Storage

Store at 2-8°C. Avoid freeze.
Buffer: PBS containing 0.2% BSA, preserved with proclin300 or sodium azide (as specified on the Certificate of Analysis), pH 7.3.

Validation Data



Flow cytometry: 1X10⁶ Human PBMC were surface-stained with PE Rabbit anti-Human/Monkey CD14 mAb (A25938, 5 µl/Test) and ABflo® 488 Rabbit IgG isotype control (A22069, 5 µl/Test, left) or ABflo® 488 Rabbit anti-Human/Monkey HLA-DR mAb (A25079, 5 µl/Test, right). Cells in the lymphocyte and monocyte gate were used for analysis.