

APC Mouse anti-Human CD3 mAb

Catalog No.: A25082

Basic Information

Observed MW

Calculated MW

23kDa

Category

Primary antibody

Applications

FC

Cross-Reactivity

Human

CloneNo number

AMC50002-APC

Conjugate

APC. Ex:650nm. Em:660nm.

Recommended Dilutions

FC 5 μ l per 10^6 cells in
100 μ l volume

Background

The protein encoded by this gene is the CD3-epsilon polypeptide, which together with CD3-gamma, -delta and -zeta, and the T-cell receptor alpha/beta and gamma/delta heterodimers, forms the T-cell receptor-CD3 complex. This complex plays an important role in coupling antigen recognition to several intracellular signal-transduction pathways. The genes encoding the epsilon, gamma and delta polypeptides are located in the same cluster on chromosome 11. The epsilon polypeptide plays an essential role in T-cell development. Defects in this gene cause immunodeficiency. This gene has also been linked to a susceptibility to type I diabetes in women.

Immunogen Information

Gene ID

916

Swiss Prot

P07766

Immunogen

Recombinant protein of human CD3.

Synonyms

T3E; TCRE; IMD18; CD3epsilon

Contact

 | 400-999-6126

 | cn.market@abclonal.com.cn

 | www.abclonal.com.cn

Product Information

Source

Mouse

Isotype

mouse IgG2a

Purification

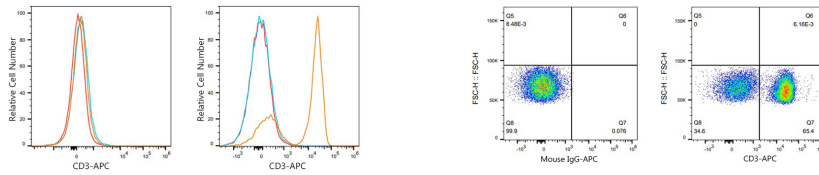
Affinity purification

Storage

Store at 2-8°C. Avoid freeze.

Buffer: PBS with 0.09% sodium azide, pH7.3.

Validation Data



Flow cytometry: 1×10^6 Raji cells (negative control, left) and Human PBMC (right) were surface-stained with APC Mouse anti-Human CD3 mAb (A25082, 5 μ l/Test, orange line) or Mouse IgG 2a isotype control (5 μ l/Test, blue line). Non-fluorescently stained cells were used as blank control (red line).

Flow cytometry: 1×10^6 PBMC were surface-stained with Mouse IgG 2a isotype control (5 μ l/Test, left) or APC Mouse anti-Human CD3 mAb (A25082, 5 μ l/Test, right).