

CD28 Rabbit mAb

Catalog No.: A25084 **Recombinant**

Basic Information

Observed MW

Refer to figures

Calculated MW

25kDa

Category

Primary antibody

Applications

ELISA,FC

Cross-Reactivity

Mouse

CloneNo number

ARC63635

Background

Enables protein kinase binding activity. Acts upstream of or within several processes, including positive regulation of immune response; positive regulation of intracellular signal transduction; and regulation of lymphocyte activation. Located in external side of plasma membrane and immunological synapse. Human ortholog(s) of this gene implicated in multiple sclerosis and type 1 diabetes mellitus. Orthologous to human CD28 (CD28 molecule).

Recommended Dilutions

FC 1:500 - 1:1000

Immunogen Information

Gene ID

12487

Swiss Prot

P31041

Immunogen

Recombinant fusion protein containing a sequence corresponding to amino acids 20-149 of mouse CD28 (NP_031668.3).

Synonyms

Cd28

Contact

☎ | 400-999-6126

✉ | cn.market@abclonal.com.cn

🌐 | www.abclonal.com.cn

Product Information

Source

Rabbit

Isotype

IgG

Purification

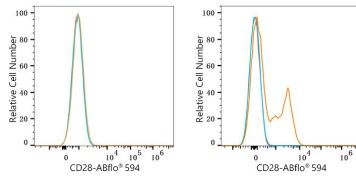
Affinity purification

Storage

Store at -20°C. Avoid freeze / thaw cycles.

Buffer: PBS with 0.05% proclin300,0.05% BSA,50% glycerol,pH7.3.

Validation Data



Flow cytometry: 1X10⁶ NIH/3T3 cells (negative control, left) and C57BL/6 mouse Splenocytes (right) were surface-stained with CD28 Rabbit mAb (A25084, 2 µg/mL, orange line) or ABflo® 594 Rabbit IgG isotype control (A23821, 5 µL/Test, blue line), followed by ABflo® 594-conjugated Goat Anti-Rabbit IgG (H+L) staining. Non-fluorescently stained cells were used as blank control (red line).