

CD39/ENTPD1 Rabbit mAb

Catalog No.: A25085 **Recombinant**

Basic Information

Observed MW

60kDa

Calculated MW

58kDa

Category

Primary antibody

Applications

ELISA, WB, FC

Cross-Reactivity

Human

CloneNo number

ARC64460

Background

The protein encoded by this gene is a plasma membrane protein that hydrolyzes extracellular ATP and ADP to AMP. Inhibition of this protein's activity may confer anticancer benefits. Several transcript variants encoding different isoforms have been found for this gene.

Recommended Dilutions

WB	1:500 - 1:1000
FC	1:500 - 1:1000

Immunogen Information

Gene ID

953

Swiss Prot

P49961

Immunogen

Recombinant fusion protein containing a sequence corresponding to amino acids 255-442 of human CD39/ENTPD1 (NP_001767.3).

Synonyms

CD39; SPG64; ATPDase; NTPDase-1; CD39/ENTPD1

Contact

 | 400-999-6126

 | cn.market@abclonal.com.cn

 | www.abclonal.com.cn

Product Information

Source

Rabbit

Isotype

IgG

Purification

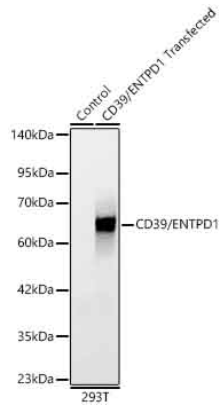
Affinity purification

Storage

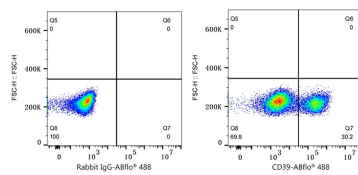
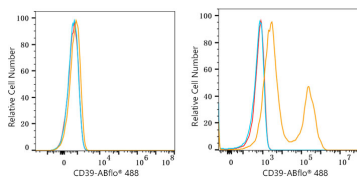
Store at -20°C. Avoid freeze / thaw cycles.

Buffer: PBS with 0.05% proclin300, 0.05% BSA, 50% glycerol, pH7.3.

Validation Data



Western blot analysis of lysates from wild type (WT) and 293T cells transfected with CD39/ENTPD1 using CD39/ENTPD1 Rabbit mAb(A25085) at 1:1000 dilution.
 Secondary antibody: HRP Goat Anti-Rabbit IgG (H+L) (AS014) at 1:10000 dilution.
 Lysates/proteins: 25 µg per lane.
 Blocking buffer: 3% nonfat dry milk in TBST.
 Detection: ECL Basic Kit (RM00020).
 Exposure time: 90s.



Flow cytometry: 1×10^6 293F cells (negative control, left) and 293F (Transfection, right) cells were surface-stained with CD39/ENTPD1 Rabbit mAb (A25085, 2 µg/mL, orange line) or ABflo® 488 Rabbit IgG isotype control (A22069, 5 µl/Test, blue line), followed by FITC conjugated goat anti-Rabbit pAb staining. Non-fluorescently stained cells were used as blank control (red line).

Flow cytometry: 1×10^6 293F (Transfection) cells were surface-stained with ABflo® 488 Rabbit IgG isotype control (A22069, 5 µl/Test, left) or CD39/ENTPD1 Rabbit mAb (A25085, 2 µg/mL, right).