

CD104/Integrin β 4 Rabbit mAb

Catalog No.: A25086 **Recombinant**

Basic Information

Observed MW

Refer to figures

Calculated MW

202kDa

Category

Primary antibody

Applications

ELISA,FC,IF/ICC

Cross-Reactivity

Human

CloneNo number

ARC64818

Background

Integrins are heterodimers comprised of alpha and beta subunits, that are noncovalently associated transmembrane glycoprotein receptors. Different combinations of alpha and beta polypeptides form complexes that vary in their ligand-binding specificities. Integrins mediate cell-matrix or cell-cell adhesion, and transduced signals that regulate gene expression and cell growth. This gene encodes the integrin beta 4 subunit, a receptor for the laminins. This subunit tends to associate with alpha 6 subunit and is likely to play a pivotal role in the biology of invasive carcinoma. Mutations in this gene are associated with epidermolysis bullosa with pyloric atresia. Multiple alternatively spliced transcript variants encoding distinct isoforms have been found for this gene.

Recommended Dilutions

FC 1:100 - 1:500 IF/ICC1:200

Immunogen Information

Gene ID

3691

Swiss Prot

P16144

Immunogen

Recombinant fusion protein containing a sequence corresponding to amino acids 611-710AA of human CD104/Integrin β 4 (NP_000204.3).

Synonyms

CD104; GP150; JEB5A; JEB5B; CD104/Integrin β 4

Contact

☎ | 400-999-6126

✉ | cn.market@abclonal.com.cn

🌐 | www.abclonal.com.cn

Product Information

Source

Rabbit

Isotype

IgG

Purification

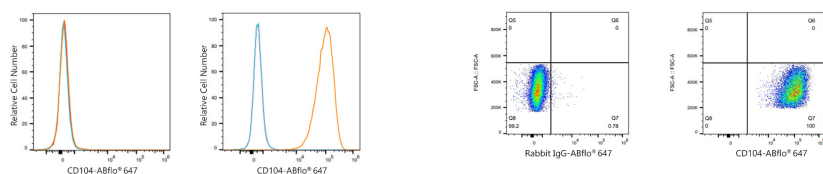
Affinity purification

Storage

Store at -20°C. Avoid freeze / thaw cycles.

Buffer: PBS with 0.05% proclin300,0.05% BSA,50% glycerol,pH7.3.

Validation Data



Flow cytometry: 1×10^6 K-562 cells (negative control, left) and A431 cells (right) were surface-stained with CD104/Integrin $\beta 4$ Rabbit mAb (A25086, 2 $\mu\text{g}/\text{mL}$, orange line) or ABflo® 647 Rabbit IgG isotype control (A22070, 5 $\mu\text{l}/\text{Test}$, blue line), followed by Alexa Fluor® 647 conjugated goat anti-rabbit pAb staining. Non-fluorescently stained cells were used as blank control (red line).

Flow cytometry: 1×10^6 A431 cells were surface-stained with ABflo® 647 Rabbit IgG isotype control (A22070, 5 $\mu\text{l}/\text{Test}$, left) or CD104/Integrin $\beta 4$ Rabbit mAb (A25086, 2 $\mu\text{g}/\text{mL}$, right).