

# LIFR/CD118 Rabbit mAb

Catalog No.: A25091 **Recombinant**

## Basic Information

### Observed MW

Refer to figures

### Calculated MW

124kDa

### Category

Primary antibody

### Applications

ELISA,FC

### Cross-Reactivity

Human

### CloneNo number

ARC65282

## Background

This gene encodes a protein that belongs to the type I cytokine receptor family. This protein combines with a high-affinity converter subunit, gp130, to form a receptor complex that mediates the action of the leukemia inhibitory factor, a polyfunctional cytokine that is involved in cellular differentiation, proliferation and survival in the adult and the embryo. Mutations in this gene cause Schwartz-Jampel syndrome type 2, a disease belonging to the group of the bent-bone dysplasias. A translocation that involves the promoter of this gene, t(5;8)(p13;q12) with the pleiomorphic adenoma gene 1, is associated with salivary gland pleiomorphic adenoma, a common type of benign epithelial tumor of the salivary gland. Multiple splice variants encoding two different isoforms have been found for this gene.

## Recommended Dilutions

FC 1:500 - 1:1000

## Immunogen Information

### Gene ID

3977

### Swiss Prot

P42702

### Immunogen

Recombinant fusion protein containing a sequence corresponding to amino acids 45-833 of human LIFR/CD118 (NP\_002301.1).

### Synonyms

SWS; SJS2; STWS; CD118; LIF-R; LIFR/CD118

## Contact

☎ | 400-999-6126

✉ | [cn.market@abclonal.com.cn](mailto:cn.market@abclonal.com.cn)

🌐 | [www.abclonal.com.cn](http://www.abclonal.com.cn)

## Product Information

### Source

Rabbit

### Isotype

IgG

### Purification

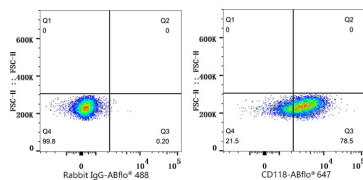
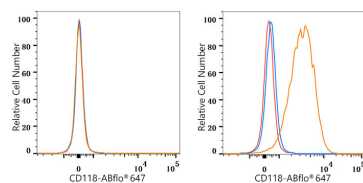
Affinity purification

### Storage

Store at -20°C. Avoid freeze / thaw cycles.

Buffer: PBS with 0.05% proclin300,0.05% BSA,50% glycerol,pH7.3.

## Validation Data



Flow cytometry: 1X10<sup>6</sup> REH cells (negative control, left) and HeLa cells (right) were surface-stained with LIFR/CD118 Rabbit mAb (A25091, 2 µg/mL, orange line) or ABflo® 647 Rabbit IgG isotype control (A22070, 5 µL/test, blue line), followed by Alexa Fluor® 647 conjugated goat anti-rabbit pAb staining. Non-fluorescently stained cells were used as blank control (red line).

Flow cytometry: 1X10<sup>6</sup> HeLa cells were surface-stained with ABflo® 647 Rabbit IgG isotype control (A22070, 5 µL/test, left) or LIFR/CD118 Rabbit mAb (A25091, 2 µg/mL, right).