

GLI2 Rabbit pAb

Catalog No.: A25103

Basic Information

Observed MW

Refer to figures

Calculated MW

74kDa

Category

Primary antibody

Applications

ELISA,IF/ICC

Cross-Reactivity

Human

Background

Enables DNA-binding transcription activator activity, RNA polymerase II-specific; RNA polymerase II cis-regulatory region sequence-specific DNA binding activity; and promoter-specific chromatin binding activity. Acts upstream of or within several processes, including animal organ development; chordate embryonic development; and regulation of smoothened signaling pathway. Located in several cellular components, including axoneme; ciliary tip; and nuclear speck. Is expressed in several structures, including central nervous system; embryo mesenchyme; eye; genitourinary system; and jaw. Human ortholog(s) of this gene implicated in Culler-Jones syndrome; holoprosencephaly 9; and spina bifida. Orthologous to human GLI2 (GLI family zinc finger 2).

Recommended Dilutions

IF/ICC 1:50 - 1:200

Immunogen Information

Gene ID

14633

Swiss Prot

Q0VGT2

Immunogen

Recombinant Protein corresponding to a sequence within amino acids 327-442 of mouse GLI2(NP_001074594.1).

Synonyms

GLI2; CJS; HPE9; PHS2; THP1; THP2; Gli2

Contact

☎ | 400-999-6126

✉ | cn.market@abclonal.com.cn

🌐 | www.abclonal.com.cn

Product Information

Source

Rabbit

Isotype

IgG

Purification

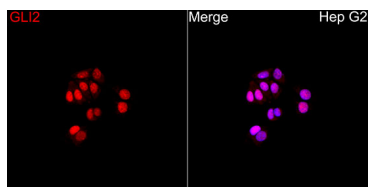
Affinity purification

Storage

Store at -20°C. Avoid freeze / thaw cycles.

Buffer: PBS with 0.05% proclin300,50% glycerol,pH7.3.

Validation Data



Immunofluorescence analysis of Hep G2 cells using GLI2 Rabbit pAb(A25103) at a dilution of 1:150 (40x lens). Secondary antibody: Cy3 Goat Anti-Rabbit IgG (H+L)(AS007) at 1:500 dilution. Blue: DAPI for nuclear staining.