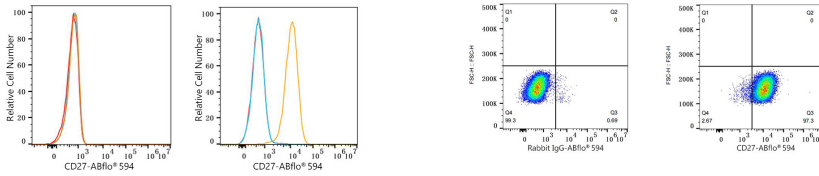


Validation Data



Flow cytometry: 1×10^6 HEL cells (negative control, left) and Daudi cells (right) were surface-stained with ABflo® 594 Rabbit anti-Human CD27 mAb (A25110, 5 μ l/Test, orange line) or ABflo® 594 Rabbit IgG isotype control (A23821, 5 μ l/Test, blue line). Non-fluorescently stained cells were used as blank control (red line).

Flow cytometry: 1×10^6 Daudi cells were surface-stained with ABflo® 594 Rabbit IgG isotype control (A23821, 5 μ l/Test, left) or ABflo® 594 Rabbit anti-Human CD27 mAb (A25110, 5 μ l/Test, right).