

FHL5 Rabbit mAb

Catalog No.: A25133 **Recombinant**

Basic Information

Observed MW

35kDa

Calculated MW

33kDa

Category

Primary antibody

Applications

ELISA, WB, IF/ICC, IP

Cross-Reactivity

Human

CloneNo number

ARC63031

Background

The protein encoded by this gene is coordinately expressed with activator of cAMP-responsive element modulator (CREM). It is associated with CREM and confers a powerful transcriptional activation function. CREM acts as a transcription factor essential for the differentiation of spermatids into mature spermatozoa. There are multiple polyadenylation sites found in this gene. Polymorphisms in this gene may be associated with susceptibility for migraine headaches. Alternative splicing results in multiple transcript variants encoding the same protein.

Recommended Dilutions

WB 1:1000 - 1:5000

IF/ICC 1:50 - 1:200

IP 0.5µg-4µg antibody for
200µg-400µg extracts of
whole cells

Immunogen Information

Gene ID

9457

Swiss Prot

Q5TD97

Immunogen

Recombinant fusion protein containing a sequence corresponding to amino acids 162-284 of human FHL5 (NP_065228.4)

Synonyms

ACT; FHL-5; dj393D12.2; 1700027G07Rik; FHL5

Contact

☎ | 400-999-6126

✉ | cn.market@abclonal.com.cn

🌐 | www.abclonal.com.cn

Product Information

Source

Rabbit

Isotype

IgG

Purification

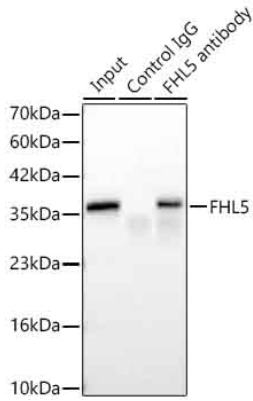
Affinity purification

Storage

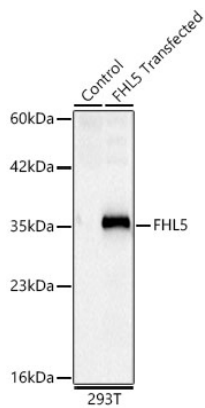
Store at -20°C. Avoid freeze / thaw cycles.

Buffer: PBS with 0.05% proclin300, 0.05% BSA, 50% glycerol, pH7.3.

Validation Data



Immunoprecipitation of FHL5 in 300 µg extracts from 293T cells transfected with FHL5, using 3 µg FHL5 Rabbit mAb (A25133). Western blot analysis was performed using FHL5 Rabbit mAb (A25133) at 1:3000 dilution.



Western blot analysis of lysates from wild type (WT) and 293T cells transfected with FHL5 using FHL5 Rabbit mAb(A25133) at 1:4000 dilution.

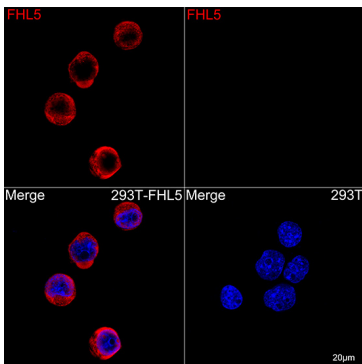
Secondary antibody: HRP Goat Anti-Rabbit IgG (H+L) (AS014) at 1:10000 dilution.

Lysates/proteins: 25 µg per lane.

Blocking buffer: 3% nonfat dry milk in TBST.

Detection: ECL Basic Kit (RM00020).

Exposure time: 5s.



Confocal imaging of 293T cells transfected with FHL5 using FHL5 Rabbit mAb (A25133, dilution 1:200) followed by a further incubation with Cy3 Goat Anti-Rabbit IgG (H+L) (AS007, dilution 1:500) (Red). DAPI was used for nuclear staining (Blue). Objective: 100x.