

# CD177 Rabbit mAb

Catalog No.: A25146 **Recombinant**

## Basic Information

### Observed MW

### Calculated MW

15kDa/27kDa/46kDa

### Category

Primary antibody

### Applications

ELISA,FC

### Cross-Reactivity

Human

### CloneNo number

ARC62693

## Background

This gene encodes a glycosyl-phosphatidylinositol (GPI)-linked cell surface glycoprotein that plays a role in neutrophil activation. The protein can bind platelet endothelial cell adhesion molecule-1 and function in neutrophil transmigration. Mutations in this gene are associated with myeloproliferative diseases. Over-expression of this gene has been found in patients with polycythemia rubra vera. Autoantibodies against the protein may result in pulmonary transfusion reactions, and it may be involved in Wegener's granulomatosis. A related pseudogene, which is adjacent to this gene on chromosome 19, has been identified.

## Recommended Dilutions

FC 1:100 - 1:500

## Immunogen Information

### Gene ID

57126

### Swiss Prot

Q8N6Q3

### Immunogen

Recombinant fusion protein containing a sequence corresponding to amino acids 22-407 of human CD177 (NP\_065139.2).

### Synonyms

CD177; HNA-2a; HNA2A; NB1; NB1 GP; PRV-1; PRV1; NB1GP; CD177 antigen

## Contact

 | 400-999-6126

 | [cn.market@abclonal.com.cn](mailto:cn.market@abclonal.com.cn)

 | [www.abclonal.com.cn](http://www.abclonal.com.cn)

## Product Information

### Source

Rabbit

### Isotype

IgG

### Purification

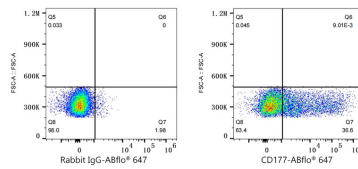
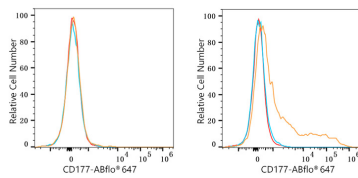
Affinity purification

### Storage

Store at -20°C. Avoid freeze / thaw cycles.

Buffer: PBS with 0.05% proclin300,0.05% BSA,50% glycerol,pH7.3.

## Validation Data



Flow cytometry:  $1 \times 10^6$  T-47D cells (negative control, left) and RPMI 8226 cells (right) were surface-stained with CD177 Rabbit mAb (A25146, 2  $\mu\text{g}/\text{mL}$ , orange line) or ABflo® 647 Rabbit IgG isotype control (A22070, 5  $\mu\text{l}/\text{Test}$ , blue line), followed by Alexa Fluor® 647 conjugated goat anti-rabbit pAb staining. Non-fluorescently stained cells were used as blank control (red line).

Flow cytometry:  $1 \times 10^6$  RPMI 8226 cells were surface-stained with ABflo® 647 Rabbit IgG isotype control (A22070, 5  $\mu\text{l}/\text{Test}$ , left) or CD177 Rabbit mAb (A25146, 2  $\mu\text{g}/\text{mL}$ , right).