

# ABflo® 647 Rabbit anti-Mouse CD126/IL-6R $\alpha$ chain mAb

Catalog No.: A25150

## Basic Information

### Observed MW

### Calculated MW

50kDa

### Category

Primary antibody

### Applications

FC

### Cross-Reactivity

Mouse

### CloneNo number

ARC63756-ABflo647

### Conjugate

ABflo® 647. Ex:648nm. Em:664nm.

## Recommended Dilutions

FC 5  $\mu$ l per  $10^6$  cells in  
100  $\mu$ l volume

## Background

Enables interleukin-6 binding activity and interleukin-6 receptor activity. Involved in T-helper 17 cell lineage commitment and interleukin-6-mediated signaling pathway. Located in cell surface. Part of interleukin-6 receptor complex. Is expressed in several structures, including adipose tissue; alimentary system; genitourinary system; hemolymphoid system; and nervous system. Human ortholog(s) of this gene implicated in Alzheimer's disease; Huntington's disease; hyper IgE syndrome; obesity; and stomach cancer. Orthologous to human IL6R (interleukin 6 receptor).

## Immunogen Information

### Gene ID

16194

### Swiss Prot

P22272

### Immunogen

Recombinant fusion protein containing a sequence corresponding to amino acids 20-357 of mouse CD126/IL-6R $\alpha$  chain (NP\_034689.2).

### Synonyms

Il6r; CD126; IL-6R; IL-6RA; IL-6R-alpha

## Contact

☎ | 400-999-6126

✉ | [cn.market@abclonal.com.cn](mailto:cn.market@abclonal.com.cn)

🌐 | [www.abclonal.com.cn](http://www.abclonal.com.cn)

## Product Information

### Source

Rabbit

### Isotype

IgG

### Purification

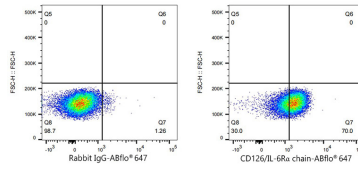
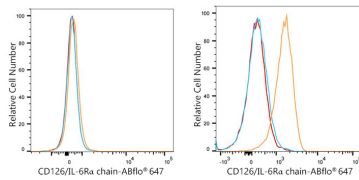
Affinity purification

### Storage

Store at 2-8°C. Avoid freeze.

Buffer: PBS with 0.03% proclin300,0.2% BSA,pH7.3.

## Validation Data



Flow cytometry:  $1 \times 10^6$  C2C12 cells (Low Expression, left) and RAW 264.7 cells (right) were surface-stained with ABflo® 647 Rabbit anti-Mouse CD126/IL-6R $\alpha$  chain mAb (A25150, 5  $\mu$ l/Test, orange line) or ABflo® 647 Rabbit IgG isotype control (A22070, 5  $\mu$ l/Test, blue line). Non-fluorescently stained cells were used as blank control (red line).

Flow cytometry:  $1 \times 10^6$  RAW 264.7 cells were surface-stained with ABflo® 647 Rabbit IgG isotype control (A22070, 5  $\mu$ l/Test, left) or ABflo® 647 Rabbit anti-Mouse CD126/IL-6R $\alpha$  chain mAb (A25150, 5  $\mu$ l/Test, right).