

ABflo® 594 Rabbit anti-Rat CD31 mAb

Catalog No.: A25154

Basic Information

Observed MW

Calculated MW

76kDa

Category

Primary antibody

Applications

FC

Cross-Reactivity

Rat

CloneNo number

ARC64727-ABflo594

Conjugate

ABflo® 594. Ex:588nm. Em:604nm.

Recommended Dilutions

FC 5 µl per 10⁶ cells in
100 µl volume

Background

Enables protein phosphatase binding activity. Involved in several processes, including cellular response to interferon-gamma; negative regulation of GTPase activity; and negative regulation of actin filament polymerization. Located in cell surface and ruffle. Used to study pulmonary hypertension. Biomarker of bacterial pneumonia; orchitis; and osteoarthritis. Human ortholog(s) of this gene implicated in coronary artery disease (multiple); lung non-small cell carcinoma; neuroblastoma; and psoriatic arthritis. Orthologous to human PECAM1 (platelet and endothelial cell adhesion molecule 1).

Immunogen Information

Gene ID

29583

Swiss Prot

Q3SWT0

Immunogen

Recombinant fusion protein containing a sequence corresponding to amino acids 18-585 of rat CD31 (NP_113779.1).

Synonyms

CD31; Pecam; CD31/PECAM1

Contact

☎ | 400-999-6126

✉ | cn.market@abclonal.com.cn

🌐 | www.abclonal.com.cn

Product Information

Source

Rabbit

Isotype

IgG

Purification

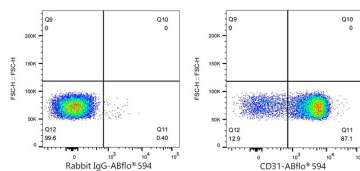
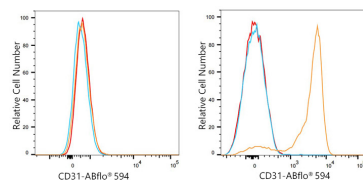
Affinity purification

Storage

Store at 2-8°C. Avoid freeze.

Buffer: PBS with 0.03% proclin300,0.2% BSA,pH7.3.

Validation Data



Flow cytometry: 1×10^6 PC-12 cells (negative control, left) and Rat Splenocytes (right) were surface-stained with ABflo® 594 Rabbit anti-Rat CD31 mAb (A25154, 5 μ l/Test, orange line) or ABflo® 594 Rabbit IgG isotype control (A23821, 5 μ l/Test, blue line). Non-fluorescently stained cells were used as blank control (red line).

Flow cytometry: 1×10^6 Rat Splenocytes were surface-stained with ABflo® 594 Rabbit IgG isotype control (A23821, 5 μ l/Test, left) or ABflo® 594 Rabbit anti-Rat CD31 mAb (A25154, 5 μ l/Test, right).