

ABflo® 594 Rabbit anti-Human CD157/BST-1 mAb

Catalog No.: A25157

Basic Information

Observed MW

Calculated MW

36kDa/29kDa

Category

Primary antibody

Applications

FC

Cross-Reactivity

Human

CloneNo number

ARC65494-ABflo594

Conjugate

ABflo® 594. Ex:588nm. Em:604nm.

Recommended Dilutions

FC 5 µl per 10⁶ cells in
100 µl volume

Background

Bone marrow stromal cell antigen-1 is a stromal cell line-derived glycosylphosphatidylinositol-anchored molecule that facilitates pre-B-cell growth. The deduced amino acid sequence exhibits 33% similarity with CD38. BST1 expression is enhanced in bone marrow stromal cell lines derived from patients with rheumatoid arthritis. The polyclonal B-cell abnormalities in rheumatoid arthritis may be, at least in part, attributed to BST1 overexpression in the stromal cell population.

Immunogen Information

Gene ID

683

Swiss Prot

Q10588

Immunogen

Recombinant fusion protein containing a sequence corresponding to amino acids 29-292 of human CD157/BST-1 (NP_004325.2).

Synonyms

CD157; cADPR2; BST1

Contact

☎ | 400-999-6126

✉ | cn.market@abclonal.com.cn

🌐 | www.abclonal.com.cn

Product Information

Source

Rabbit

Isotype

IgG

Purification

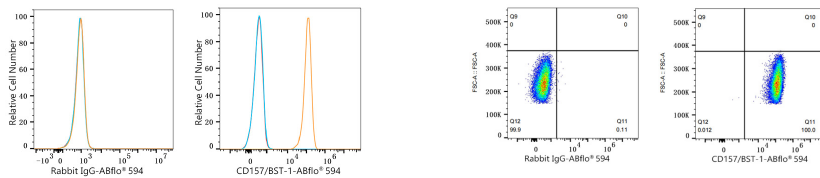
Affinity purification

Storage

Store at 2-8°C. Avoid freeze.

Buffer: PBS with 0.03% proclin300,0.2% BSA,pH7.3.

Validation Data



Flow cytometry: 1×10^6 MCF7 cells (Low Expression, left) and THP-1 cells (right) were surface-stained with ABflo® 594 Rabbit anti-Human CD157/BST-1 mAb (A25157, 5 μ l/Test, orange line) or ABflo® 594 Rabbit IgG isotype control (A23821, 5 μ l/Test, blue line). Non-fluorescently stained cells were used as blank control (red line).

Flow cytometry: 1×10^6 THP-1 cells were surface-stained with ABflo® 594 Rabbit IgG isotype control (A23821, 5 μ l/Test, left) or ABflo® 594 Rabbit anti-Human CD157/BST-1 mAb (A25157, 5 μ l/Test, right).