

# ABflo® 488 Mouse Anti-Rabbit IgM (Fc) mAb

Catalog No.: A25158

## Basic Information

### Observed MW

### Calculated MW

52kDa

### Category

Primary antibody

### Applications

FC

### Cross-Reactivity

Rabbit

### CloneNo number

AMC50004-ABf488

### Conjugate

ABflo® 488. Ex:491nm. Em:516nm.

## Recommended Dilutions

FC 5 µl per 10<sup>6</sup> cells in  
100 µl volume

## Background

Secondary antibodies are affinity-purified antibodies which will work with target-specific primary antibody in the detection, sorting or purification of its specified target. Secondary antibodies offer increased versatility enabling users to use many detection systems (e.g. HRP, AP, fluorescence). They can also provide greater sensitivity through signal amplification as multiple secondary antibodies. Most commonly, secondary antibodies are generated by immunizing the host animal (different from host species of primary antibody) with a pooled population of normal immunoglobulins from the host species of primary antibody and can be further purified and modified (i.e. antibody fragmentation, label conjugation, etc.) to ensure well-characterized specificity to corresponding normal immunoglobulins.

## Immunogen Information

### Gene ID

□

### Swiss Prot

P03988

### Immunogen

Recombinant fusion protein containing a sequence corresponding to amino acids 107-458 of rabbit IgM (Fc) (P03988).

### Synonyms

## Contact

☎ | 400-999-6126

✉ | [cn.market@abclonal.com.cn](mailto:cn.market@abclonal.com.cn)

🌐 | [www.abclonal.com.cn](http://www.abclonal.com.cn)

## Product Information

### Source

Mouse

### Isotype

Mouse IgG1

### Purification

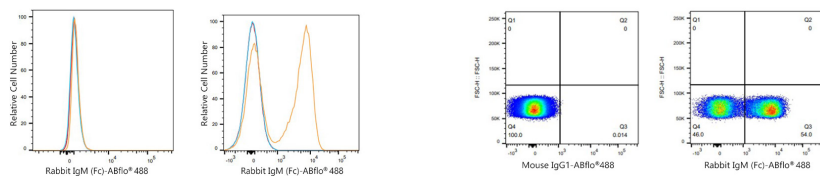
Affinity purification

### Storage

Store at 2-8°C. Avoid freeze.

Buffer: PBS with 0.03% proclin300,pH7.3.

## Validation Data



Flow cytometry:  $1 \times 10^6$  RK13 cells (negative control, left) and Rabbit PBMC (right) were surface-stained with ABflo® 488 Mouse Anti-Rabbit IgM (Fc) mAb (A25158, 5  $\mu$ l/Test, orange line) or ABflo® 488 Mouse IgG1 isotype control (5  $\mu$ l/Test, blue line). Non-fluorescently stained cells were used as blank control (red line).

Flow cytometry:  $1 \times 10^6$  Rabbit PBMC were surface-stained with ABflo® 488 Mouse IgG1 isotype control (5  $\mu$ l/Test, left) or ABflo® 488 Mouse Anti-Rabbit IgM (Fc) mAb (A25158, 5  $\mu$ l/Test, right).