

ADAM10 Rabbit pAb

Catalog No.: A25167

Basic Information

Observed MW

68kDa

Calculated MW

84kDa

Category

Primary antibody

Applications

ELISA, WB, IF/ICC, FC

Cross-Reactivity

Human, Rat

Background

Members of the ADAM family are cell surface proteins with a unique structure possessing both potential adhesion and protease domains. This gene encodes an ADAM family member that cleaves many proteins including TNF-alpha and E-cadherin. Alternate splicing results in multiple transcript variants encoding different proteins that may undergo similar processing.

Recommended Dilutions

WB	1:1000 - 1:5000
IF/ICC	1:50 - 1:200
FC	1:500 - 1:1000

Immunogen Information

Gene ID

102

Swiss Prot

O14672

Immunogen

Recombinant Protein corresponding to a sequence within amino acids 214-672 of human ADAM10(NP_001101.1).

Synonyms

RAK; kuz; AD10; AD18; MADM; CD156c; CDw156; HsT18717; ADAM10

Contact

☎ | 400-999-6126

✉ | cn.market@abclonal.com.cn

🌐 | www.abclonal.com.cn

Product Information

Source

Rabbit

Isotype

IgG

Purification

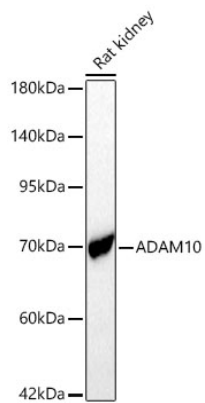
Affinity purification

Storage

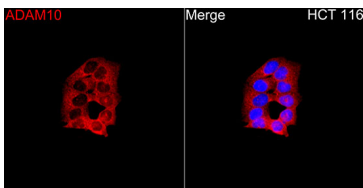
Store at -20°C. Avoid freeze / thaw cycles.

Buffer: PBS with 0.05% proclin300, 50% glycerol, pH7.3.

Validation Data



Western blot analysis of lysates from Rat kidney using ADAM10 Rabbit pAb (A25167) at 1:2000 dilution.
Secondary antibody: HRP-conjugated Goat anti-Rabbit IgG (H+L) (AS014) at 1:10000 dilution.
Lysates/proteins: 25 µg per lane.
Blocking buffer: 3% nonfat dry milk in TBST.
Detection: ECL Basic Kit (RM00020).
Exposure time: 20s.



Immunofluorescence analysis of HCT 116 cells using ADAM10 Rabbit pAb(A25167) at a dilution of 1:250 (40x lens). Secondary antibody: Cy3 Goat Anti-Rabbit IgG (H+L)(AS007) at 1:500 dilution. Blue: DAPI for nuclear staining.