

RIP3 Rabbit pAb

Catalog No.: A25169

Basic Information

Observed MW

Refer to figures

Calculated MW

57kDa

Category

Primary antibody

Applications

ELISA, IHC-P

Cross-Reactivity

Human

Background

The product of this gene is a member of the receptor-interacting protein (RIP) family of serine/threonine protein kinases, and contains a C-terminal domain unique from other RIP family members. The encoded protein is predominantly localized to the cytoplasm, and can undergo nucleocytoplasmic shuttling dependent on novel nuclear localization and export signals. It is a component of the tumor necrosis factor (TNF) receptor-I signaling complex, and can induce apoptosis and weakly activate the NF-kappaB transcription factor.

Recommended Dilutions

IHC-P 1:50 - 1:200

Immunogen Information

Gene ID

11035

Swiss Prot

Q9Y572

Immunogen

A synthetic peptide corresponding to a sequence within amino acids 410-518 of human RIP3(NP_006862.2).

Synonyms

RIP3; RIPK3

Contact

 | 400-999-6126

 | cn.market@abclonal.com.cn

 | www.abclonal.com.cn

Product Information

Source

Rabbit

Isotype

IgG

Purification

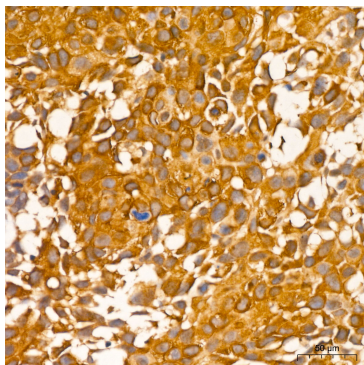
Affinity purification

Storage

Store at -20°C. Avoid freeze / thaw cycles.

Buffer: PBS with 0.05% proclin300, 50% glycerol, pH7.3.

Validation Data



Immunohistochemistry analysis of RIP3 in paraffin-embedded Human cervical squamous cell carcinoma tissue using RIP3 Rabbit pAb (A25169) at a dilution of 1:100 (40x lens). High pressure antigen retrieval was performed with 0.01 M citrate buffer (pH 6.0) prior to IHC staining.