

HSD17B13 Rabbit pAb

Catalog No.: A25170

Basic Information

Observed MW

34kDa

Calculated MW

34kDa

Category

Primary antibody

Applications

ELISA, WB, IF/ICC

Cross-Reactivity

Human, Rat

Background

Predicted to enable oxidoreductase activity, acting on the CH-OH group of donors, NAD or NADP as acceptor and steroid dehydrogenase activity. Acts upstream of or within positive regulation of lipid biosynthetic process. Located in lipid droplet.

Recommended Dilutions

WB 1:1000 - 1:5000

IF/ICC 1:100 - 1:500

Immunogen Information

Gene ID

345275

Swiss Prot

Q7Z5P4

Immunogen

Recombinant Protein corresponding to a sequence within amino acids 34-300 of human HSD17B13(NP_835236.2).

Synonyms

FLDP; SCDR9; NIIL497; SDR16C3; HMFN0376; HSD17B13

Contact

☎ | 400-999-6126

✉ | cn.market@abclonal.com.cn

🌐 | www.abclonal.com.cn

Product Information

Source

Rabbit

Isotype

IgG

Purification

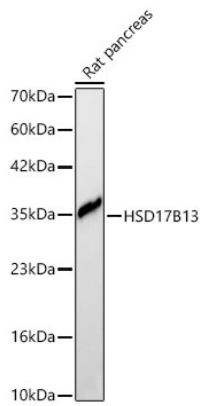
Affinity purification

Storage

Store at -20°C. Avoid freeze / thaw cycles.

Buffer: PBS with 0.05% proclin300, 50% glycerol, pH7.3.

Validation Data



Western blot analysis of lysates from Rat pancreas using HSD17B13 Rabbit pAb(A25170) at 1:2000 dilution.

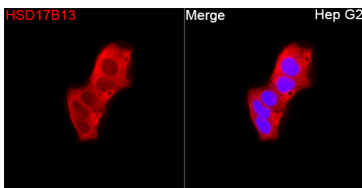
Secondary antibody:HRP Goat Anti-Rabbit IgG (H+L)(AS014) at 1:10000 dilution.

Lysates/proteins: 25 µg per lane.

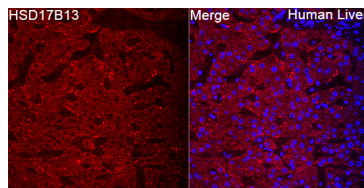
Blocking buffer: 3% nonfat dry milk in TBST.

Detection:ECL Basic Kit (RM00020).

Exposure time:20s.



Immunofluorescence analysis of Hep G2 cells using HSD17B13 Rabbit pAb(A25170) at a dilution of 1:200 (40x lens). Secondary antibody: Cy3 Goat Anti-Rabbit IgG (H+L)(AS007) at 1:500 dilution. Blue: DAPI for nuclear staining.



Immunofluorescence analysis of paraffin-embedded Human liver using HSD17B13 Rabbit pAb(A25170) at a dilution of 1:200 (40x lens). Secondary antibody: Cy3 Goat Anti-Rabbit IgG (H+L)(AS007) at 1:500 dilution. Blue: DAPI for nuclear staining.