

GLUT4 Rabbit pAb

Catalog No.: A25174

Basic Information

Observed MW

Refer to figures

Calculated MW

55kDa

Category

Primary antibody

Applications

ELISA, IHC-P, IF/ICC

Cross-Reactivity

Human, Mouse

Background

This gene is a member of the solute carrier family 2 (facilitated glucose transporter) family and encodes a protein that functions as an insulin-regulated facilitative glucose transporter. In the absence of insulin, this integral membrane protein is sequestered within the cells of muscle and adipose tissue. Within minutes of insulin stimulation, the protein moves to the cell surface and begins to transport glucose across the cell membrane. Mutations in this gene have been associated with noninsulin-dependent diabetes mellitus (NIDDM).

Recommended Dilutions

IHC-P 1:50 - 1:200

IF/ICC 1:100 - 1:500

Immunogen Information

Gene ID

6517

Swiss Prot

P14672

Immunogen

A synthetic peptide corresponding to a sequence within amino acids 210-310 of human GLUT4(NP_001033.1).

Synonyms

GLUT4

Contact

☎ | 400-999-6126

✉ | cn.market@abclonal.com.cn

🌐 | www.abclonal.com.cn

Product Information

Source

Rabbit

Isotype

IgG

Purification

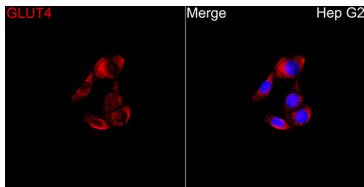
Affinity purification

Storage

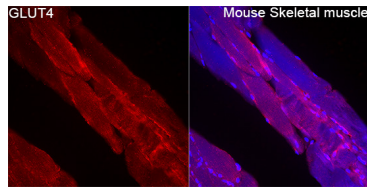
Store at -20°C. Avoid freeze / thaw cycles.

Buffer: PBS with 0.05% proclin300, 50% glycerol, pH7.3.

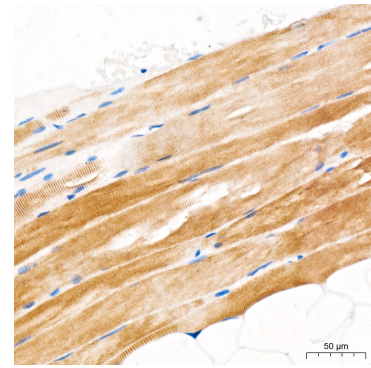
Validation Data



Immunofluorescence analysis of Hep G2 cells using GLUT4 Rabbit pAb(A25174) at a dilution of 1:250 (40x lens). Secondary antibody: Cy3 Goat Anti-Rabbit IgG (H+L)(AS007) at 1:500 dilution. Blue: DAPI for nuclear staining.



Immunofluorescence analysis of paraffin-embedded Mouse skeletal muscle tissue using GLUT4 Rabbit pAb(A25174) at a dilution of 1:250 (40x lens). Secondary antibody: Cy3 Goat Anti-Rabbit IgG (H+L)(AS007) at 1:500 dilution. Blue: DAPI for nuclear staining.



Immunohistochemistry analysis of GLUT4 in paraffin-embedded Human skeletal muscle tissue using GLUT4 Rabbit pAb (A25174) at a dilution of 1:200 (40x lens). High pressure antigen retrieval was performed with 0.01 M citrate buffer (pH 6.0) prior to IHC staining.