

CD14 Rabbit mAb

Catalog No.: A25179 **Recombinant**

Basic Information

Observed MW

50-60 kDa

Calculated MW

39k Da

Category

Primary antibody

Applications

WB,FC,ELISA

Cross-Reactivity

Mouse

CloneNo number

ARC66543

Background

This gene encodes a protein that plays an important role in the innate immune response and is expressed in monocyte/macrophage cells. This gene product acts as a co-receptor that binds several microbial and fungal molecules, including lipopolysaccharides (LPS). This proteins LPS-binding activity is enhanced by the LPS binding protein (LBP) to allow binding to the TLR4-MD-2 co-receptor complex. The product of this gene is found in two forms, either as a soluble protein or attached to the cell surface by a glycosylphosphatidylinositol anchor.

Recommended Dilutions

WB 1:1000 - 1:2000**FC** 1:500 - 1:1000

ELISA Recommended starting concentration is 1 µg/mL. Please optimize the concentration based on your specific assay requirements.

Immunogen Information

Gene ID

12475

Swiss Prot

P10810

Immunogen

Recombinant protein (or fragment). This information is considered to be commercially sensitive.

Synonyms

CD14

Contact

 | 400-999-6126 | cn.market@abclonal.com.cn | www.abclonal.com.cn

Product Information

Source

Rabbit

Isotype

IgG

Purification

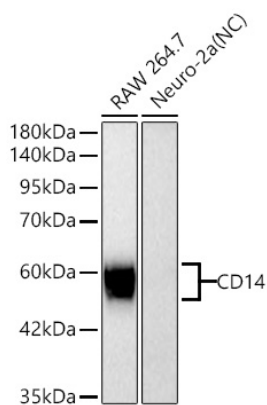
Affinity purification

Storage

Store at -20°C. Avoid freeze / thaw cycles.

Buffer: PBS containing 50% glycerol and 0.05% BSA, preserved with proclin300 or sodium azide (as specified on the Certificate of Analysis), pH 7.3.

Validation Data



Western blot analysis of various lysates using CD14 Rabbit mAb (A25179) at 1:2000 dilution incubated overnight at 4°C.

Secondary antibody: HRP-conjugated Goat anti-Rabbit IgG (H+L) (AS014) at 1:10000 dilution.

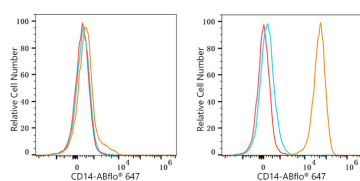
Lysates/proteins: 25 µg per lane.

Blocking buffer: 3% nonfat dry milk in TBST.

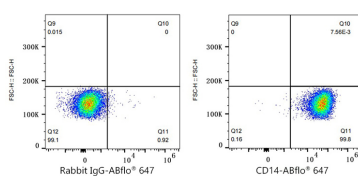
Detection: ECL Basic Kit (RM00020).

Negative control (NC): Neuro-2a.

Exposure time: 90 s.



Flow cytometry: 1×10^6 Neuro-2a cells (negative control, left) and RAW 264.7 cells (right) were surface-stained with CD14 Rabbit mAb (A25179, 2 µg/mL, orange line) or ABflo® 647 Rabbit IgG isotype control (A22070, 5 µl/Test, blue line), followed by Alexa Fluor® 647 conjugated goat anti-rabbit pAb staining. Non-fluorescently stained cells were used as blank control (red line).



Flow cytometry: 1×10^6 RAW 264.7 cells were surface-stained with ABflo® 647 Rabbit IgG isotype control (A22070, 5 µl/Test, left) or CD14 Rabbit mAb (A25179, 2 µg/mL, right).