

CXCL9/MIG Rabbit mAb

Catalog No.: A25183 **Recombinant**

Basic Information

Observed MW

35kDa

Calculated MW

14kDa

Category

Primary antibody

Applications

WB,IF/ICC,ELISA

Cross-Reactivity

Human

CloneNo number

ARC64297

Background

This antimicrobial gene is part of a chemokine superfamily that encodes secreted proteins involved in immunoregulatory and inflammatory processes. The protein encoded is thought to be involved in T cell trafficking. The encoded protein binds to C-X-C motif chemokine 3 and is a chemoattractant for lymphocytes but not for neutrophils.

Recommended Dilutions

WB 1:1000 - 1:4000

IF/ICC 1:200 - 1:800

ELISA Recommended starting concentration is 1 µg/mL. Please optimize the concentration based on your specific assay requirements.

Immunogen Information

Gene ID

4283

Swiss Prot

Q07325

Immunogen

Recombinant fusion protein containing a sequence corresponding to amino acids 23-125 of human CXCL9/MIG(NP_002407.1).

Synonyms

CMK; MIG; Humig; SCYB9; crg-10; CXCL9

Contact

☎ | 400-999-6126

✉ | cn.market@abclonal.com.cn

🌐 | www.abclonal.com.cn

Product Information

Source

Rabbit

Isotype

IgG

Purification

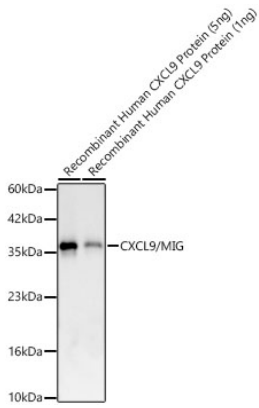
Affinity purification

Storage

Store at -20°C. Avoid freeze / thaw cycles.

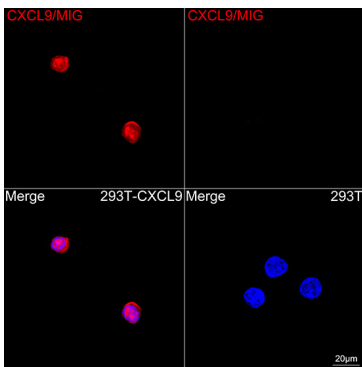
Buffer: PBS with 0.05% proclin300,0.05% BSA,50% glycerol,pH7.3.

Validation Data



Western blot analysis of recombinant Human CXCL9 Protein using CXCL9/MIG Protein Rabbit mAb (A25183) at 1:1000 dilution.
Secondary antibody: HRP-conjugated Goat anti-Rabbit IgG (H+L) (AS014) at 1:10000 dilution.
Lysates/proteins: 5ng/1ng per lane.
Blocking buffer: 3% nonfat dry milk in TBST.
Detection: ECL Basic Kit (RM00020).

Exposure time: 30s.



Confocal imaging of 293T cells transfected with CXCL9/MIG using CXCL9/MIG Rabbit mAb (A25183, dilution 1:200) followed by a further incubation with Cy3 Goat Anti-Rabbit IgG (H+L) (AS007, dilution 1:500)(Red). DAPI was used for nuclear staining (Blue).
Objective: 100x.