

# ABflo® 647 Rabbit anti-Mouse CD14 mAb

Catalog No.: A25191

## Basic Information

### Observed MW

Refer to figures

### Calculated MW

39kDa

### Category

Primary antibody

### Applications

FC

### Cross-Reactivity

Mouse

### CloneNo number

ARC66543

### Conjugate

ABflo® 647, Ex:648nm, Em:664nm.

## Recommended Dilutions

**FC** 5 µl per 10<sup>6</sup> cells in  
100 µl volume

## Background

This gene encodes a protein that plays an important role in the innate immune response and is expressed in monocyte/macrophage cells. This gene product acts as a co-receptor that binds several microbial and fungal molecules, including lipopolysaccharides (LPS). This protein's LPS-binding activity is enhanced by the LPS binding protein (LBP) to allow binding to the TLR4-MD-2 co-receptor complex. The product of this gene is found in two forms, either as a soluble protein or attached to the cell surface by a glycosylphosphatidylinositol anchor.

## Immunogen Information

### Gene ID

12475

### Swiss Prot

P10810

### Immunogen

Recombinant protein (or fragment). This information is considered to be commercially sensitive.

### Synonyms

CD14

## Contact

 | 400-999-6126

 | [cn.market@abclonal.com.cn](mailto:cn.market@abclonal.com.cn)

 | [www.abclonal.com.cn](http://www.abclonal.com.cn)

## Product Information

### Source

Rabbit

### Isotype

IgG

### Purification

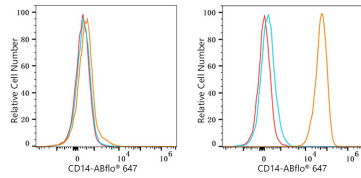
Affinity purification

### Storage

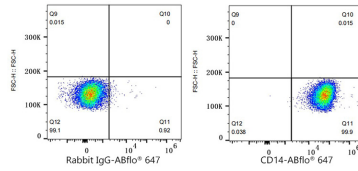
Store at 2-8°C. Avoid freeze.

Buffer: PBS containing 0.2% BSA, preserved with proclin300 or sodium azide (as specified on the Certificate of Analysis), pH 7.3.

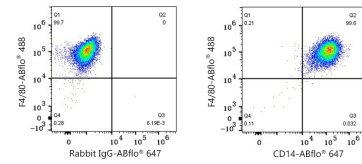
## Validation Data



Flow cytometry:  $1 \times 10^6$  Neuro-2a cells (negative control, left) and RAW 264.7 cells (right) were surface-stained with ABflo® 647 Rabbit anti-Mouse CD14 mAb (A25191, 5  $\mu$ l/Test, orange line) or ABflo® 647 Rabbit IgG isotype control (A22070, 5  $\mu$ l/Test, blue line). Non-fluorescently stained cells were used as blank control (red line).



Flow cytometry:  $1 \times 10^6$  RAW 264.7 cells were surface-stained with ABflo® 647 Rabbit IgG isotype control (A22070, 5  $\mu$ l/Test, left) or ABflo® 647 Rabbit anti-Mouse CD14 mAb (A25191, 5  $\mu$ l/Test, right).



Flow cytometry:  $1 \times 10^6$  C57BL/6 Mouse Bone Marrow-Derived M0 Macrophages were surface-stained with ABflo® 488 Rat anti-Mouse F4/80 mAb (A27479, 5  $\mu$ l/Test) and ABflo® 647 Rabbit IgG isotype control (A22070, 5  $\mu$ l/Test, left) or ABflo® 647 Rabbit anti-Mouse CD14 mAb (A25191, 5  $\mu$ l/Test, right).