

# PE Rabbit anti-Mouse CD301 (MGL1/2) mAb

Catalog No.: A25198

## Basic Information

### Observed MW

### Calculated MW

### Category

Primary antibody

### Applications

FC

### Cross-Reactivity

Mouse

### CloneNo number

ARC64810

### Conjugate

PE. Ex:565nm. Em:574nm.

## Background

Predicted to enable carbohydrate binding activity. Acts upstream of or within connective tissue replacement involved in inflammatory response wound healing. Predicted to be located in membrane. Predicted to be integral component of membrane. Predicted to be active in external side of plasma membrane. Is expressed in several structures, including cartilage; dermis; embryo mesenchyme; metencephalon part of 4th ventricle choroid plexus; and spinal cord marginal layer. Orthologous to human CLEC10A (C-type lectin domain containing 10A).

## Recommended Dilutions

FC 5  $\mu$ l per  $10^6$  cells in  
100  $\mu$ l volume

## Immunogen Information

### Gene ID

17312/216864

### Swiss Prot

P49300/Q8JZN1

### Immunogen

Recombinant protein (or fragment). This information is considered to be commercially sensitive.

### Synonyms

Mgl; Mgl1; CD301a; M-ASGP-BP-1

## Contact

☎ | 400-999-6126

✉ | [cn.market@abclonal.com.cn](mailto:cn.market@abclonal.com.cn)

🌐 | [www.abclonal.com.cn](http://www.abclonal.com.cn)

## Product Information

### Source

Rabbit

### Isotype

IgG

### Purification

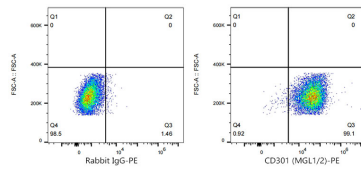
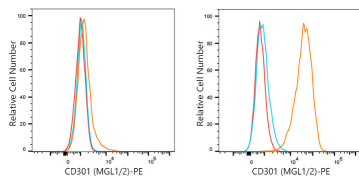
Affinity purification

### Storage

Store at 2-8°C. Avoid freeze.

Buffer: PBS containing 0.2% BSA, preserved with proclin300 or sodium azide (as specified on the Certificate of Analysis), pH 7.3.

## Validation Data



Flow cytometry:  $1 \times 10^6$  Neuro-2a cells (negative control, left) and Raw264.7 cells (right) were surface-stained with PE Rabbit anti-Mouse CD301 (MGL1/2) mAb (A25198, 2 µg/mL, orange line) or PE Rabbit IgG isotype control (A24172, 5 µl/Test, blue line), followed by PE conjugated Donkey anti-rabbit pAb staining. Non-fluorescently stained cells were used as blank control (red line).

Flow cytometry:  $1 \times 10^6$  Raw264.7 cells were surface-stained with PE Rabbit IgG isotype control (A24172, 5 µl/Test, left) or PE Rabbit anti-Mouse CD301 (MGL1/2) mAb (A25198, 2 µg/mL, right).