

Complement factor B Rabbit pAb

Catalog No.: A25201

Basic Information

Observed MW

86kDa

Calculated MW

86kDa

Category

Primary antibody

Applications

ELISA,WB,IF/ICC

Cross-Reactivity

Human, Mouse

Background

This gene encodes complement factor B, a component of the alternative pathway of complement activation. Factor B circulates in the blood as a single chain polypeptide. Upon activation of the alternative pathway, it is cleaved by complement factor D yielding the noncatalytic chain Ba and the catalytic subunit Bb. The active subunit Bb is a serine protease which associates with C3b to form the alternative pathway C3 convertase. Bb is involved in the proliferation of preactivated B lymphocytes, while Ba inhibits their proliferation. This gene localizes to the major histocompatibility complex (MHC) class III region on chromosome 6. This cluster includes several genes involved in regulation of the immune reaction. Polymorphisms in this gene are associated with a reduced risk of age-related macular degeneration. The polyadenylation site of this gene is 421 bp from the 5' end of the gene for complement component 2.

Recommended Dilutions

WB 1:500 - 1:1000**IF/ICC** 1:50 - 1:200

Immunogen Information

Gene ID

629

Swiss Prot

P00751

Immunogen

Recombinant Protein corresponding to a sequence within amino acids 26-764 of human Complement factor B(NP_001701.2).

Synonyms

BF; FB; BFD; GBG; CFAB; CFBD; PBF2; AHUS4; FBI12; H2-Bf; ARMD14; Complement factor B (CFB)

Contact

 | 400-999-6126 | cn.market@abclonal.com.cn | www.abclonal.com.cn

Product Information

Source

Rabbit

Isotype

IgG

Purification

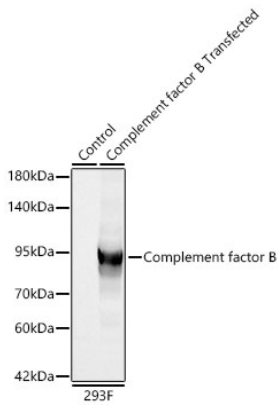
Affinity purification

Storage

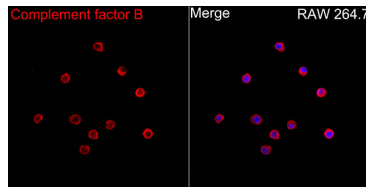
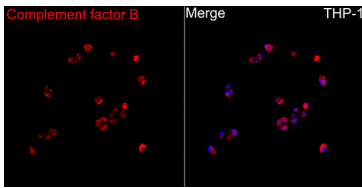
Store at -20°C. Avoid freeze / thaw cycles.

Buffer: PBS with 0.05% proclin300,50% glycerol,pH7.3.

Validation Data



Western blot analysis of lysates from wild type (WT) and 293F cells transfected with Complement factor B using Complement factor B Rabbit pAb(A25201) at 1:1000 dilution. Secondary antibody:HRP Goat Anti-Rabbit IgG (H+L)(AS014) at 1:10000 dilution. Lysates/proteins: 30 µg per lane. Blocking buffer: 3% nonfat dry milk in TBST. Detection:ECL Basic Kit (RM00020). Exposure time: 10s.



Immunofluorescence analysis of THP-1 cells using Complement factor B Rabbit pAb(A25201) at a dilution of 1:100 (40x lens). Secondary antibody: Cy3 Goat Anti-Rabbit IgG (H+L)(AS007) at 1:500 dilution. Blue: DAPI for nuclear staining.

Immunofluorescence analysis of RAW 264.7 cells using Complement factor B Rabbit pAb(A25201) at a dilution of 1:100 (40x lens). Secondary antibody: Cy3 Goat Anti-Rabbit IgG (H+L)(AS007) at 1:500 dilution. Blue: DAPI for nuclear staining.