

CD163 Rabbit mAb

Catalog No.: A25206 **Recombinant**

Basic Information

Observed MW

170kDa

Calculated MW

121kDa/125kDa

Category

Primary antibody

Applications

ELISA, WB, IHC-P, IF/ICC

Cross-Reactivity

Human, Mouse, Rat

CloneNo number

ARC66243

Background

Predicted to enable scaffold protein binding activity and scavenger receptor activity. Predicted to act upstream of or within acute-phase response. Predicted to be located in plasma membrane. Predicted to be active in external side of plasma membrane. Is expressed in several structures, including gut; immune system; male reproductive gland or organ; olfactory lobe; and quadriceps femoris muscle. Orthologous to human CD163 (CD163 molecule).

Recommended Dilutions

WB	1:2000 - 1:6000
IHC-P	1:100 - 1:500
IF/ICC	1:50 - 1:200

Immunogen Information

Gene ID

93671

Swiss Prot

Q2VLH6

Immunogen

Recombinant fusion protein containing a sequence corresponding to amino acids 39-260 of mouse CD163 (NP_444324.2).

Synonyms

CD163v2; CD163v3; M130

Contact

☎	400-999-6126
✉	cn.market@abclonal.com.cn
🌐	www.abclonal.com.cn

Product Information

Source

Rabbit

Isotype

IgG

Purification

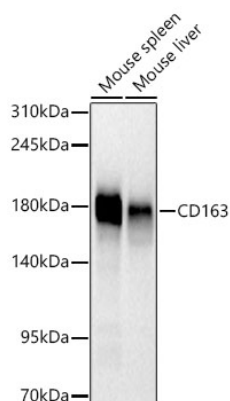
Affinity purification

Storage

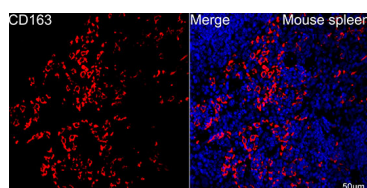
Store at -20°C. Avoid freeze / thaw cycles.

Buffer: PBS with 0.05% proclin300, 0.05% BSA, 50% glycerol, pH7.3.

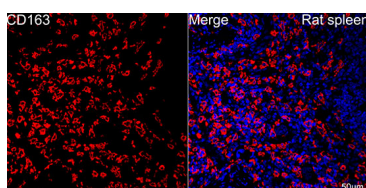
Validation Data



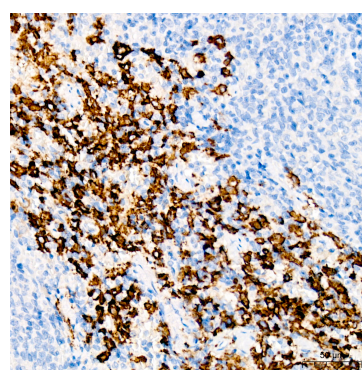
Western blot analysis of various lysates using CD163 Rabbit mAb (A25206) at 1:5000 dilution. Secondary antibody: HRP Goat Anti-Rabbit IgG (H+L) (AS014) at 1:10000 dilution. Lysates/proteins: 25 µg per lane. Blocking buffer: 3% nonfat dry milk in TBST. Detection: ECL Basic Kit (RM00020). Exposure time: 10s.



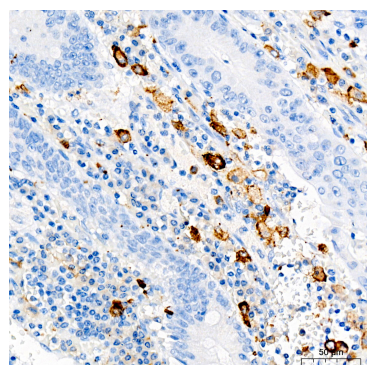
Confocal imaging of paraffin-embedded mouse spleen using CD163 Rabbit mAb (A25206, dilution 1:200) followed by a further incubation with ABflo® 488-conjugated Goat Anti-Rabbit IgG (H+L) Ab (AS073, dilution 1:500) (Red). DAPI was used for nuclear staining (Blue). Objective: 40x. Perform high pressure antigen retrieval with 0.01 M citrate buffer (pH 6.0) prior to IF staining.



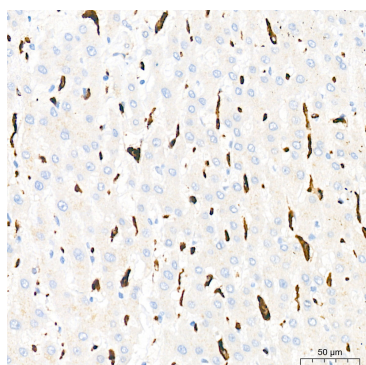
Confocal imaging of paraffin-embedded rat spleen using CD163 Rabbit mAb (A25206, dilution 1:200) followed by a further incubation with ABflo® 488-conjugated Goat Anti-Rabbit IgG (H+L) Ab (AS073, dilution 1:500) (Red). DAPI was used for nuclear staining (Blue). Objective: 40x. Perform high pressure antigen retrieval with 0.01 M citrate buffer (pH 6.0) prior to IF staining.



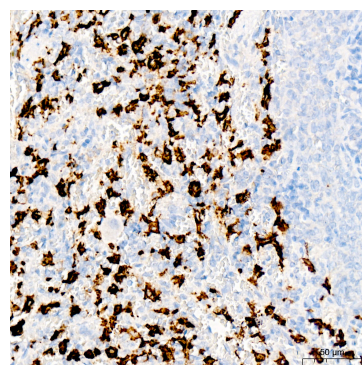
Immunohistochemistry analysis of CD163 in paraffin-embedded rat spleen tissue using CD163 Rabbit mAb (A25206) at a dilution of 1:500 (40x lens). High pressure antigen retrieval was performed with 0.01 M citrate buffer (pH 6.0) prior to IHC staining.



Immunohistochemistry analysis of CD163 in paraffin-embedded human colon carcinoma tissue using CD163 Rabbit mAb (A25206) at a dilution of 1:500 (40x lens). High pressure antigen retrieval was performed with 0.01 M citrate buffer (pH 6.0) prior to IHC staining.

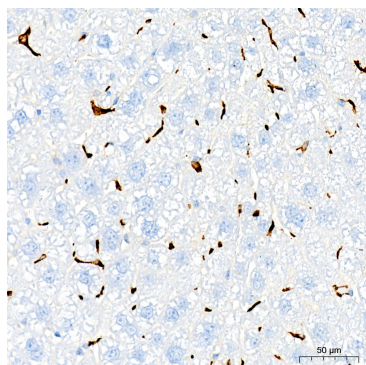


Immunohistochemistry analysis of CD163 in paraffin-embedded human liver tissue using CD163 Rabbit mAb (A25206) at a dilution of 1:500 (40x lens). High pressure antigen retrieval was performed with 0.01 M citrate buffer (pH 6.0) prior to IHC staining.

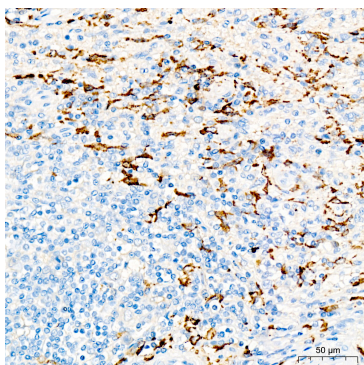


Immunohistochemistry analysis of CD163 in paraffin-embedded mouse spleen tissue using CD163 Rabbit mAb (A25206) at a dilution of 1:500 (40x lens). High pressure antigen retrieval was performed with 0.01 M citrate buffer (pH 6.0) prior to IHC staining.

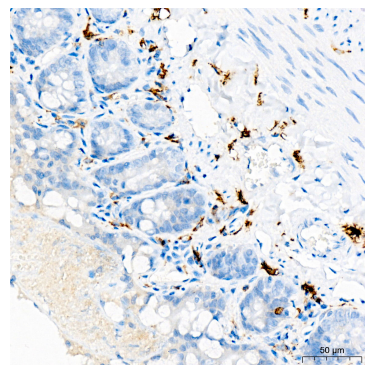
Validation Data



Immunohistochemistry analysis of CD163 in paraffin-embedded mouse liver tissue using CD163 Rabbit mAb (A25206) at a dilution of 1:500 (40x lens). High pressure antigen retrieval was performed with 0.01 M citrate buffer (pH 6.0) prior to IHC staining.



Immunohistochemistry analysis of CD163 in paraffin-embedded human spleen tissue using CD163 Rabbit mAb (A25206) at a dilution of 1:500 (40x lens). High pressure antigen retrieval was performed with 0.01 M citrate buffer (pH 6.0) prior to IHC staining.



Immunohistochemistry analysis of CD163 in paraffin-embedded rat colon tissue using CD163 Rabbit mAb (A25206) at a dilution of 1:500 (40x lens). High pressure antigen retrieval was performed with 0.01 M citrate buffer (pH 6.0) prior to IHC staining.