

# JAM-A/CD321 Rabbit mAb

Catalog No.: A25212 **Recombinant**

## Basic Information

### Observed MW

Refer to figures

### Calculated MW

32kDa

### Category

Primary antibody

### Applications

ELISA,FC

### Cross-Reactivity

Mouse

### CloneNo number

ARC65186

## Background

Predicted to enable PDZ domain binding activity; integrin binding activity; and protein homodimerization activity. Involved in intestinal absorption; regulation of cytokine production; and regulation of membrane permeability. Acts upstream of or within cell adhesion and epithelial cell differentiation. Located in bicellular tight junction. Is expressed in several structures, including 4-8 cell stage embryo; alimentary system; respiratory system; sensory organ; and urinary system. Human ortholog(s) of this gene implicated in hypertension. Orthologous to human F11R (F11 receptor).

## Recommended Dilutions

FC 1:500 - 1:1000

## Immunogen Information

### Gene ID

16456

### Swiss Prot

O88792

### Immunogen

Recombinant fusion protein containing a sequence corresponding to amino acids 27-242 of mouse JAM-A/CD321 (NP\_766235.1).

### Synonyms

JAM; Jcam; JAM-1; JAM-A; Jcam1; Ly106; ESTM33; 9130004G24; JAM-A/CD321

## Contact

☎ | 400-999-6126

✉ | [cn.market@abclonal.com.cn](mailto:cn.market@abclonal.com.cn)

🌐 | [www.abclonal.com.cn](http://www.abclonal.com.cn)

## Product Information

### Source

Rabbit

### Isotype

IgG

### Purification

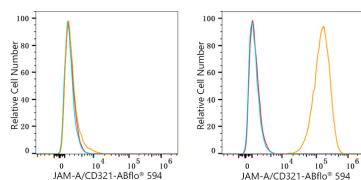
Affinity purification

### Storage

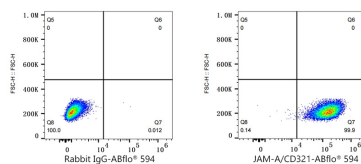
Store at -20°C. Avoid freeze / thaw cycles.

Buffer: PBS with 0.05% proclin300,0.05% BSA,50% glycerol,pH7.3.

## Validation Data



Flow cytometry:  $1 \times 10^6$  Neuro-2a cells (negative control, left) and bEnd.3 cells (right) were surface-stained with JAM-A/CD321 Rabbit mAb (A25212, 2  $\mu\text{g}/\text{mL}$ , orange line) or ABflo® 594 Rabbit IgG isotype control (A23821, 5  $\mu\text{L}/\text{Test}$ , blue line), followed by ABflo® 594-conjugated Goat Anti-Rabbit IgG (H+L) staining. Non-fluorescently stained cells were used as blank control (red line).



Flow cytometry:  $1 \times 10^6$  bEnd.3 cells were surface-stained with ABflo® 594 Rabbit IgG isotype control (A23821, 5  $\mu\text{L}/\text{Test}$ , left) or JAM-A/CD321 Rabbit mAb (A25212, 2  $\mu\text{g}/\text{mL}$ , right).