

CXCR3-B Rabbit pAb

Catalog No.: A25216

Basic Information

Observed MW

43kDa

Calculated MW

45kDa

Category

Primary antibody

Applications

ELISA,WB,IF/ICC

Cross-Reactivity

Human, Mouse

Background

This gene encodes a G protein-coupled receptor with selectivity for three chemokines, termed CXCL9/Mig (monokine induced by interferon-g), CXCL10/IP10 (interferon-g-inducible 10 kDa protein) and CXCL11/I-TAC (interferon-inducible T cell a-chemoattractant). Binding of chemokines to this protein induces cellular responses that are involved in leukocyte traffic, most notably integrin activation, cytoskeletal changes and chemotactic migration. Alternatively spliced transcript variants encoding different isoforms have been found for this gene. One of the isoforms (CXCR3-B) shows high affinity binding to chemokine, CXCL4/PF4 (PMID:12782716).

Recommended Dilutions

WB	1:500 - 1:1000
IF/ICC	1:50 - 1:200

Immunogen Information

Gene ID

2833

Swiss Prot

P49682-2

Immunogen

Recombinant Protein corresponding to a sequence within amino acids 1-100 human CXCR3-B(NP_001136269.1).

Synonyms

GPR9; MigR; CD182; CD183; Mig-R; CKR-L2; CMKAR3; IP10-R; CXCR3

Contact

☎ | 400-999-6126

✉ | cn.market@abclonal.com.cn

🌐 | www.abclonal.com.cn

Product Information

Source

Rabbit

Isotype

IgG

Purification

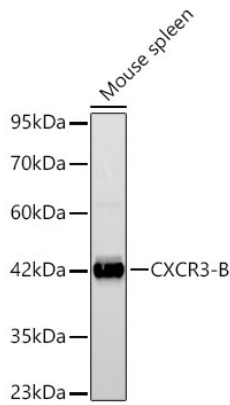
Affinity purification

Storage

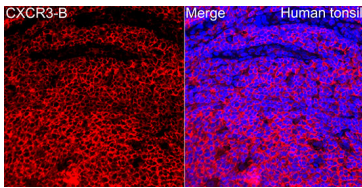
Store at -20°C. Avoid freeze / thaw cycles.

Buffer: PBS with 0.05% proclin300,50% glycerol,pH7.3.

Validation Data



Western blot analysis of lysates from Mouse spleen using CXCR3-B Rabbit pAb (A25216) at 1:1000 dilution.
Secondary antibody: HRP-conjugated Goat anti-Rabbit IgG (H+L) (AS014) at 1:10000 dilution.
Lysates/proteins: 25 µg per lane.
Blocking buffer: 3% nonfat dry milk in TBST.
Detection: ECL Basic Kit (RM00020).
Exposure time:30s.



Immunofluorescence analysis of paraffin-embedded Human tonsil tissue using CXCR3-B Rabbit pAb (A25216) at a dilution of 1:100 (40x lens). Secondary antibody: Cy3-conjugated Goat anti-Rabbit IgG (H+L) (AS007) at 1:500 dilution. Blue: DAPI for nuclear staining. Perform high pressure antigen retrieval with 0.01 M citrate buffer (pH 6.0) prior to IF staining.