

CHUK Rabbit pAb

Catalog No.: A25218

Basic Information

Observed MW

Refer to figures

Calculated MW

78kDa

Category

Primary antibody

Applications

ELISA,IF/ICC

Cross-Reactivity

Human, Mouse

Background

Contributes to I κ B kinase activity. Involved in several processes, including Rho protein signal transduction; response to cholecystokinin; and response to lipopolysaccharide. Located in cytosol and intracellular membrane-bounded organelle. Part of I κ B kinase complex. Used to study muscular atrophy. Biomarker of colitis. Human ortholog(s) of this gene implicated in fetal encasement syndrome and prostate cancer. Orthologous to human CHUK (component of inhibitor of nuclear factor kappa B kinase complex).

Recommended Dilutions

IF/ICC 1:50 - 1:200

Immunogen Information

Gene ID

309361

Swiss Prot

G3V926

Immunogen

Recombinant Protein corresponding to a sequence within amino acids 400-660 of rat CHUK(NP_001101058.1).

Synonyms

Ikka; Ikbka

Contact

 | 400-999-6126

 | cn.market@abclonal.com.cn

 | www.abclonal.com.cn

Product Information

Source

Rabbit

Isotype

IgG

Purification

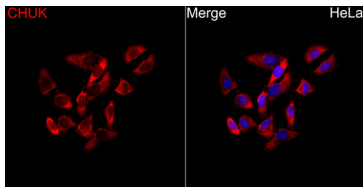
Affinity purification

Storage

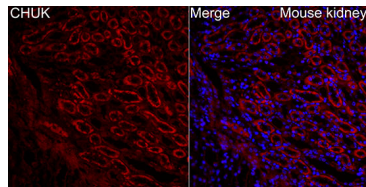
Store at -20°C. Avoid freeze / thaw cycles.

Buffer: PBS with 0.05% proclin300,50% glycerol,pH7.3.

Validation Data



Immunofluorescence analysis of HeLa cells using CHUK Rabbit pAb (A25218) at a dilution of 1:100 (40x lens). Secondary antibody: Cy3 Goat Anti-Rabbit IgG (H+L) (AS007) at 1:500 dilution. Blue: DAPI for nuclear staining.



Immunofluorescence analysis of paraffin-embedded Mouse kidney tissue using CHUK Rabbit pAb (A25218) at a dilution of 1:100 (40x lens). Secondary antibody: Cy3 Goat Anti-Rabbit IgG (H+L) (AS007) at 1:500 dilution. Blue: DAPI for nuclear staining. Perform high pressure antigen retrieval with 0.01 M citrate buffer (pH 6.0) prior to IF staining.