

Chk2 Rabbit pAb

Catalog No.: A25227

Basic Information

Observed MW

Refer to figures

Calculated MW

61kDa

Category

Primary antibody

Applications

ELISA, IF/ICC

Cross-Reactivity

Human

Background

Enables protein kinase activity. Acts upstream of or within cellular response to gamma radiation; peptidyl-serine phosphorylation; and signal transduction by p53 class mediator. Predicted to be located in Golgi apparatus and PML body. Predicted to be active in cytoplasm and nucleus. Predicted to colocalize with chromosome, telomeric region. Is expressed in several structures, including central nervous system; genitourinary system; and liver. Human ortholog(s) of this gene implicated in several diseases, including Li-Fraumeni syndrome 2; breast cancer (multiple); colorectal cancer; osteosarcoma; and prostate cancer. Orthologous to human CHEK2 (checkpoint kinase 2).

Recommended Dilutions

IF/ICC 1:50 - 1:200

Immunogen Information

Gene ID

50883

Swiss Prot

Q9Z265

Immunogen

A synthetic peptide corresponding to a sequence within amino acids 1-100 of mouse Chk2 (NP_057890.1).

Synonyms

CHK2; Cds1; Rad53; HUCDS1; Chek2

Contact

☎ | 400-999-6126

✉ | cn.market@abclonal.com.cn

🌐 | www.abclonal.com.cn

Product Information

Source

Rabbit

Isotype

IgG

Purification

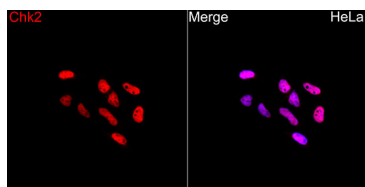
Affinity purification

Storage

Store at -20°C. Avoid freeze / thaw cycles.

Buffer: PBS with 0.05% proclin300, 50% glycerol, pH7.3.

Validation Data



Immunofluorescence analysis of HeLa cells using Chk2 Rabbit pAb (A25227) at a dilution of 1:100 (40x lens). Secondary antibody: Cy3 Goat Anti-Rabbit IgG (H+L) (AS007) at 1:500 dilution. Blue: DAPI for nuclear staining.