

# Type S APL Rabbit pAb

Catalog No.: A25233

## Basic Information

### Observed MW

100kDa

### Calculated MW

47-48kDa/62-97kDa/39kDa/50kDa

### Category

Primary antibody

### Applications

ELISA,WB

### Cross-Reactivity

Human

## Background

Promyelocytic leukemia/retinoic acid receptor alpha or PML-RARA refers to an abnormal fusion gene sequence. It is a specific rearrangement of genetic material from two separate chromosomes (chromosomal translocation) and is associated with a specific type of leukemia. Promyelocytic leukemia (PML) is a member of the tripartite motif (TRIM) family. The TRIM motif includes three zinc-binding domains, a RING, a B-box type 1 and a B-box type 2, and a coiled-coil region. This phosphoprotein localizes to nuclear bodies where it functions as a transcription factor and tumor suppressor. Its expression is cell-cycle related and it regulates the p53 response to oncogenic signals. The gene is often involved in the translocation with the retinoic acid receptor alpha gene associated with acute promyelocytic leukemia (APL). Retinoic acid receptor alpha (RARA), regulates transcription in a ligand-dependent manner. This gene has been implicated in regulation of development, differentiation, apoptosis, granulopoiesis, and transcription of clock genes. Translocations between this locus and several other loci have been associated with acute promyelocytic leukemia.

## Recommended Dilutions

WB 1:500 - 1:1000

## Immunogen Information

### Gene ID

5371/5914

### Swiss Prot

P29590/P10276

### Immunogen

A synthetic peptide corresponding to a sequence within amino acids 388-487AA + 1-100AA of human Type S APL (NP\_150241.2/ NP\_000955.1).

### Synonyms

PML/RARA; Type L APL

## Contact

☎ | 400-999-6126

✉ | [cn.market@abclonal.com.cn](mailto:cn.market@abclonal.com.cn)

🌐 | [www.abclonal.com.cn](http://www.abclonal.com.cn)

## Product Information

### Source

Rabbit

### Isotype

IgG

### Purification

Affinity purification

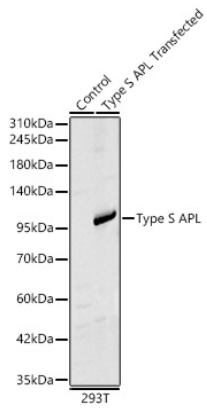
### Storage

Store at -20°C. Avoid freeze / thaw cycles.

Buffer: PBS with 0.05% proclin300,50% glycerol,pH7.3.

## Validation Data

---



Western blot analysis of lysates from wild type (WT) and 293T cells transfected with Type S APL using Type S APL Rabbit pAb(A25233) at 1:1000 dilution.

Secondary antibody: HRP Goat Anti-Rabbit IgG (H+L) (AS014) at 1:10000 dilution.

Lysates/proteins: 40.5  $\mu$ g per lane.

Blocking buffer: 3% nonfat dry milk in TBST.

Detection: ECL Basic Kit (RM00020).

Exposure time: 30s.