

MRPL19 Rabbit pAb

Catalog No.: A25245

Basic Information

Observed MW

Refer to figures

Calculated MW

33kDa

Category

Primary antibody

Applications

ELISA, IHC-P

Cross-Reactivity

Human, Mouse, Rat

Background

Mammalian mitochondrial ribosomal proteins are encoded by nuclear genes and help in protein synthesis within the mitochondrion. Mitochondrial ribosomes (mitoribosomes) consist of a small 28S subunit and a large 39S subunit. They have an estimated 75% protein to rRNA composition compared to prokaryotic ribosomes, where this ratio is reversed. Another difference between mammalian mitoribosomes and prokaryotic ribosomes is that the latter contain a 5S rRNA. Among different species, the proteins comprising the mitoribosome differ greatly in sequence, and sometimes in biochemical properties, which prevents easy recognition by sequence homology. This gene encodes a 39S subunit protein.

Recommended Dilutions

IHC-P 1:50 - 1:200

Immunogen Information

Gene ID

9801

Swiss Prot

P49406

Immunogen

Recombinant fusion protein containing a sequence corresponding to amino acids 181-292 of human MRPL19(NP_055578.2).

Synonyms

RLX1; L15mt; L19mt; bL19m; MRPL15; RPML15; MRP-L15; MRP-L19

Contact

☎ | 400-999-6126

✉ | cn.market@abclonal.com.cn

🌐 | www.abclonal.com.cn

Product Information

Source

Rabbit

Isotype

IgG

Purification

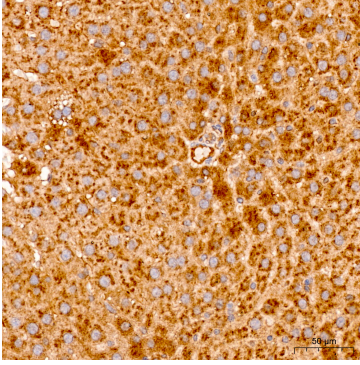
Affinity purification

Storage

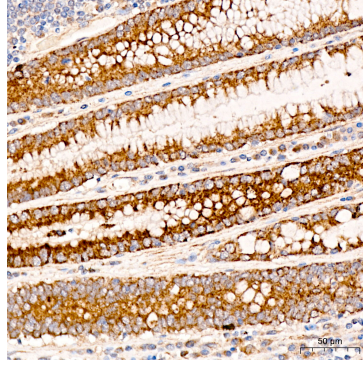
Store at -20°C. Avoid freeze / thaw cycles.

Buffer: PBS with 0.05% proclin300, 50% glycerol, pH7.3.

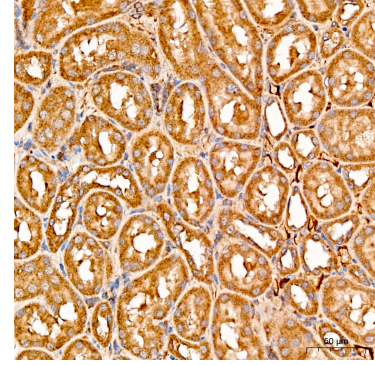
Validation Data



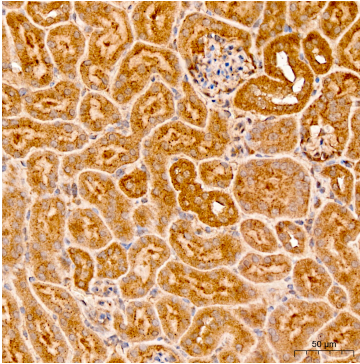
Immunohistochemistry analysis of MRPL19 in paraffin-embedded rat liver tissue using MRPL19 Rabbit pAb (A25245) at a dilution of 1:200 (40x lens). High pressure antigen retrieval was performed with 0.01 M citrate buffer (pH 6.0) prior to IHC staining.



Immunohistochemistry analysis of MRPL19 in paraffin-embedded human colon tissue using MRPL19 Rabbit pAb (A25245) at a dilution of 1:200 (40x lens). High pressure antigen retrieval was performed with 0.01 M citrate buffer (pH 6.0) prior to IHC staining.



Immunohistochemistry analysis of MRPL19 in paraffin-embedded rat kidney tissue using MRPL19 Rabbit pAb (A25245) at a dilution of 1:200 (40x lens). High pressure antigen retrieval was performed with 0.01 M citrate buffer (pH 6.0) prior to IHC staining.



Immunohistochemistry analysis of MRPL19 in paraffin-embedded mouse kidney tissue using MRPL19 Rabbit pAb (A25245) at a dilution of 1:200 (40x lens). High pressure antigen retrieval was performed with 0.01 M citrate buffer (pH 6.0) prior to IHC staining.