

# NKX2-2 Rabbit pAb

Catalog No.: A25248

## Basic Information

### Observed MW

40kDa

### Calculated MW

30kDa

### Category

Primary antibody

### Applications

ELISA,WB

### Cross-Reactivity

Human

## Background

The protein encoded by this gene contains a homeobox domain and may be involved in the morphogenesis of the central nervous system. This gene is found on chromosome 20 near NKX2-4, and these two genes appear to be duplicated on chromosome 14 in the form of TITF1 and NKX2-8. The encoded protein is likely to be a nuclear transcription factor.

## Recommended Dilutions

WB 1:1000 - 1:5000

## Immunogen Information

### Gene ID

4821

### Swiss Prot

O95096

### Immunogen

A synthetic peptide corresponding to a sequence within amino acids 102-201 of human NKX2-2(NP\_002500.1).

### Synonyms

NKX2B; NKX2.2; NKX2-2

## Contact

☎ | 400-999-6126

✉ | [cn.market@abclonal.com.cn](mailto:cn.market@abclonal.com.cn)

🌐 | [www.abclonal.com.cn](http://www.abclonal.com.cn)

## Product Information

### Source

Rabbit

### Isotype

IgG

### Purification

Affinity purification

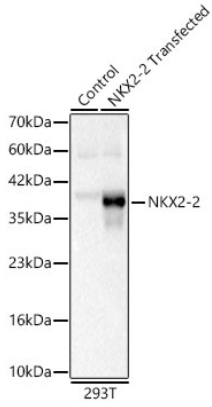
### Storage

Store at -20°C. Avoid freeze / thaw cycles.

Buffer: PBS with 0.05% proclin300,50% glycerol,pH7.3.

## Validation Data

---



Western blot analysis of lysates from wild type (WT) and 293T cells transfected with NKX2-2 using NKX2-2 Rabbit pAb(A25248) at 1:2000 dilution.  
Secondary antibody: HRP Goat Anti-Rabbit IgG (H+L) (AS014) at 1:10000 dilution.  
Lysates/proteins: 25 µg per lane.  
Blocking buffer: 3% nonfat dry milk in TBST.  
Detection: ECL Basic Kit (RM00020).  
Exposure time: 1s.