

IκB-ζ Rabbit pAb

Catalog No.: A25250

Basic Information

Observed MW

Refer to figures

Calculated MW

78kDa

Category

Primary antibody

Applications

ELISA, IHC-P

Cross-Reactivity

Mouse

Background

This gene is a member of the ankyrin-repeat family and is induced by lipopolysaccharide (LPS). The C-terminal portion of the encoded product which contains the ankyrin repeats, shares high sequence similarity with the I kappa B family of proteins. The latter are known to play a role in inflammatory responses to LPS by their interaction with NF-B proteins through ankyrin-repeat domains. Studies in mouse indicate that this gene product is one of the nuclear I kappa B proteins and an activator of IL-6 production. Two transcript variants encoding different isoforms have been found for this gene.

Recommended Dilutions

IHC-P 1:500 - 1:1000

Immunogen Information

Gene ID

64332

Swiss Prot

Q9BYH8

Immunogen

A synthetic peptide corresponding to a sequence within amino acids 1-100 of human IκB-ζ(NP_113607.1).

Synonyms

IKBZ; INAP; MAIL; ikB-zeta; ikappaBzeta; IkappaB-zeta; I-kappa-B-zeta; NFKBIZ

Contact

☎ | 400-999-6126

✉ | cn.market@abclonal.com.cn

🌐 | www.abclonal.com.cn

Product Information

Source

Rabbit

Isotype

IgG

Purification

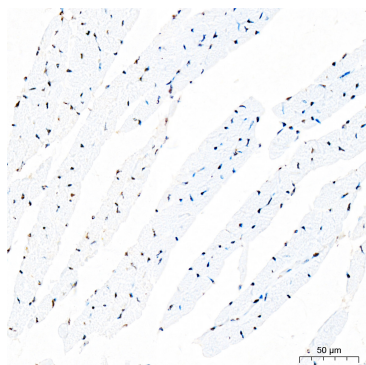
Affinity purification

Storage

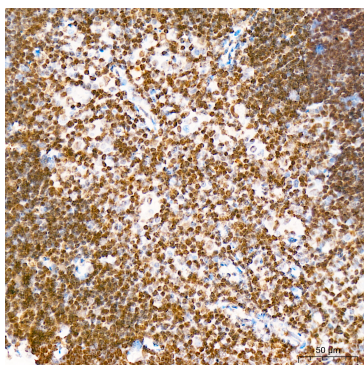
Store at -20°C. Avoid freeze / thaw cycles.

Buffer: PBS with 0.05% proclin300, 50% glycerol, pH7.3.

Validation Data



Immunohistochemistry analysis of IκB-ζ in paraffin-embedded mouse heart tissue using IκB-ζ Rabbit pAb (A25250) at a dilution of 1:800 (40x lens). High pressure antigen retrieval was performed with 0.01 M citrate buffer (pH 6.0) prior to IHC staining.



Immunohistochemistry analysis of IκB-ζ in paraffin-embedded mouse spleen tissue using IκB-ζ Rabbit pAb (A25250) at a dilution of 1:800 (40x lens). High pressure antigen retrieval was performed with 0.01 M citrate buffer (pH 6.0) prior to IHC staining.