

# IL33 Rabbit pAb

**Catalog No.: A25253**

## Basic Information

**Observed MW**

20kDa

**Calculated MW**

30kDa

**Category**

Primary antibody

**Applications**

WB, ELISA

**Cross-Reactivity**

Mouse, Rat

## Background

Enables cytokine activity and interleukin-33 receptor binding activity. Involved in several processes, including interleukin-33-mediated signaling pathway; microglial cell activation involved in immune response; and regulation of gene expression. Acts upstream of or within several processes, including negative regulation of macrophage proliferation; positive regulation of cellular defense response; and positive regulation of macromolecule metabolic process. Located in nucleus. Is expressed in several structures, including adrenal gland; alimentary system; genitourinary system; nervous system; and sensory organ. Used to study Alzheimer's disease. Human ortholog(s) of this gene implicated in candidiasis; inflammatory bowel disease; and peptic ulcer disease. Orthologous to human IL33 (interleukin 33).

## Recommended Dilutions

**WB** 1:500 - 1:1000**ELISA** Recommended starting concentration is 1 µg/mL. Please optimize the concentration based on your specific assay requirements.

## Immunogen Information

**Gene ID**

77125

**Swiss Prot**

Q8BVZ5

**Immunogen**

Recombinant protein (or fragment). This information is considered to be commercially sensitive.

**Synonyms**

IL-33; IL1f11; NF-HEV; 9230117N10Rik; IL-33

## Contact

 | 400-999-6126 | [cn.market@abclonal.com.cn](mailto:cn.market@abclonal.com.cn) | [www.abclonal.com.cn](http://www.abclonal.com.cn)

## Product Information

**Source**

Rabbit

**Isotype**

IgG

**Purification**

Affinity purification

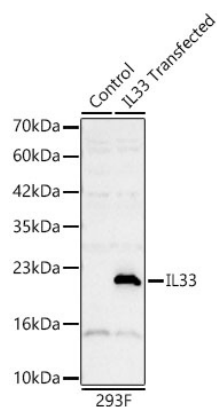
**Storage**

Store at -20°C. Avoid freeze / thaw cycles.

Buffer: PBS containing 50% glycerol, preserved with proclin300 or sodium azide (as specified on the Certificate of Analysis), pH 7.3.

## Validation Data

---



Western blot analysis of lysates from wild type (WT) and 293F cells transfected with IL33 using IL33 Rabbit pAb (A25253) at 1:1000 dilution.  
Secondary antibody: HRP-conjugated Goat anti-Rabbit IgG (H+L) (AS014) at 1:10000 dilution.  
Lysates/proteins: 40.5 µg per lane.  
Blocking buffer: 3% nonfat dry milk in TBST.  
Detection: ECL Basic Kit (RM00020).  
Exposure time: 45s.