

[KD Validated] LXR beta/NER Rabbit pAb

Catalog No.: A25259

Basic Information

Observed MW

51kDa

Calculated MW

51kDa

Category

Primary antibody

Applications

ELISA,WB

Cross-Reactivity

Human

Background

The liver X receptors, LXRA (NR1H3; MIM 602423) and LXRβ, form a subfamily of the nuclear receptor superfamily and are key regulators of macrophage function, controlling transcriptional programs involved in lipid homeostasis and inflammation. The inducible LXRA is highly expressed in liver, adrenal gland, intestine, adipose tissue, macrophages, lung, and kidney, whereas LXRβ is ubiquitously expressed. Ligand-activated LXRs form obligate heterodimers with retinoid X receptors (RXRs; see MIM 180245) and regulate expression of target genes containing LXR response elements (summary by Korf et al., 2009 [PubMed 19436111]).

Recommended Dilutions

WB 1:500 - 1:1000

Immunogen Information

Gene ID

7376

Swiss Prot

P55055

Immunogen

A synthetic peptide corresponding to a sequence within amino acids 1-100 of human LXR beta/NER (NP_009052.4).

Synonyms

NER; UNR; LXRβ; LXR-b; NER-I; RIP15; NR1H2

Contact

☎ | 400-999-6126

✉ | cn.market@abclonal.com.cn

🌐 | www.abclonal.com.cn

Product Information

Source

Rabbit

Isotype

IgG

Purification

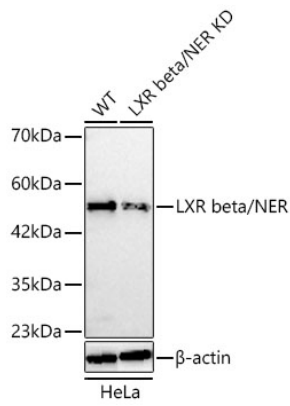
Affinity purification

Storage

Store at -20°C. Avoid freeze / thaw cycles.

Buffer: PBS with 0.05% proclin300,50% glycerol,pH7.3.

Validation Data



Western blot analysis of lysates from wild type (WT) and LXR beta/NER knockdown (KD) HeLa cells using [KD Validated] LXR beta/NER Rabbit pAb (A25259) at 1:1000 dilution. Secondary antibody:HRP Goat Anti-Rabbit IgG (H+L)(AS014) at 1:10000 dilution.Lysates/proteins: 25 μ g per lane. Blocking buffer: 3% nonfat dry milk in TBST. Detection:ECL Basic Kit (RM00020). Exposure time: 60s.